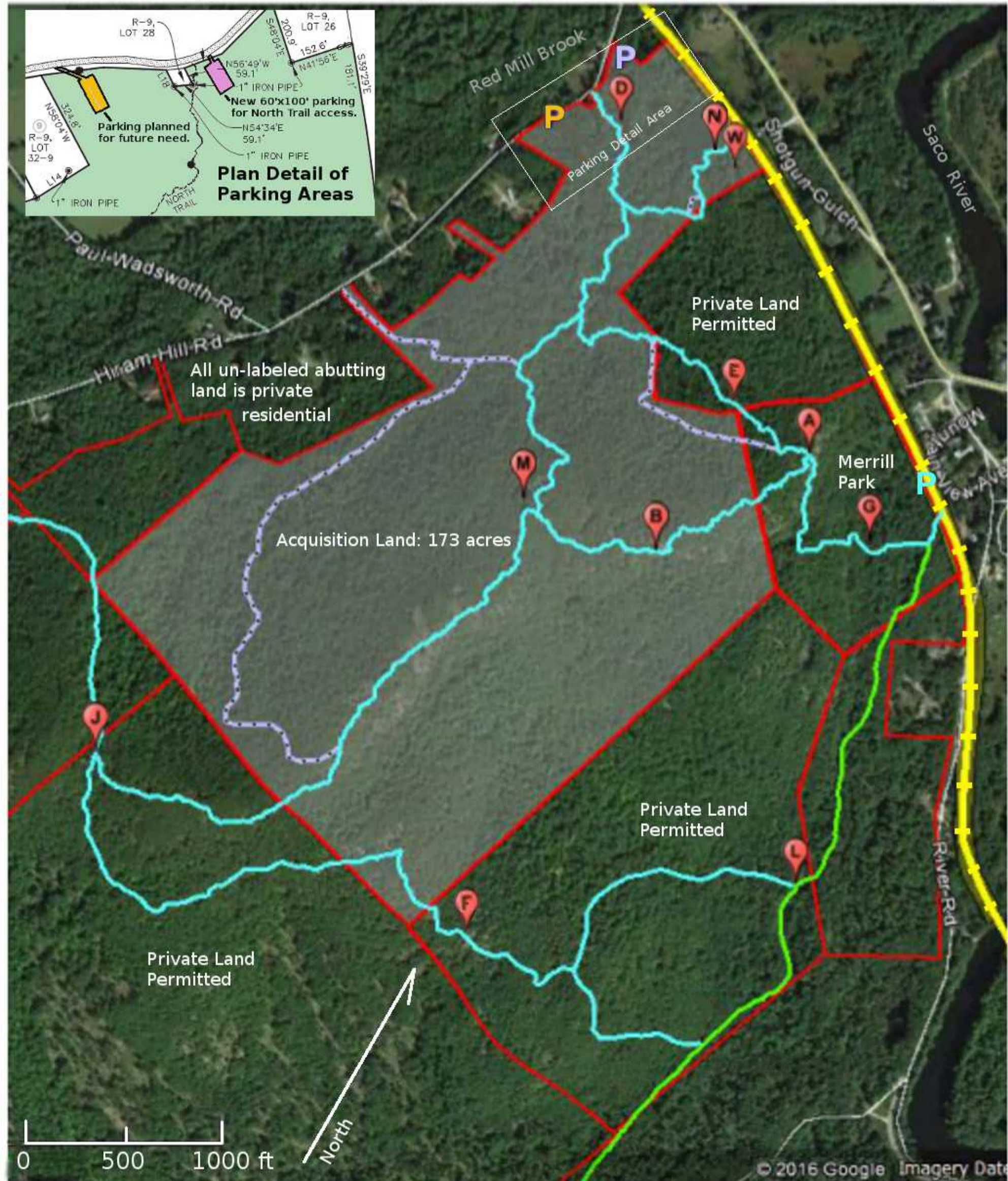


Mt Cutler Park Site Plan

Town of Hiram, Maine Oct 2018

Land acquired is 173 acres.

Note: "Private Land Permitted" is abutting land where the owner has given permission for existing trails to continue being used. These are NOT part of the LWCF project.



Legend

- Existing Trails
- Trails to be developed
- Existing Snowmobile Trail
- Mtn Division RR (State of Maine)
- Park Boundary (and other lot lines)
- Existing parking at Hiram Depot/Merrill Park
- Parking to develop at North Trail
- Future parking planned

Pins

- A - Hiram Village view from the Front Ledges.
- B - South View Ledge from Ridge Walk Trail.
- D - North Trail trailhead on Hiram Hill Road.
- G - Merrill Park and the historic "Gold Mine."
- J - Notch trail junction - trail to north is a private access and is for emergency use only.
- L - Saco Ridge Trail junction on Snowmobile Trail.
- N - Moraine Trail trailhead on Mtn Division RR.

Note: Merrill Park is a public park owned by the Hiram Development Assn. which is a community parks association.