



– FY 2023 WORK PLAN –
FY2023 WORK PLAN



SOUTHERN MAINE
PLANNING AND
DEVELOPMENT
COMMISSION

November 2022

MEMBER TOWNS

Kennebunk

Kennebunkport

Kittery

Ogunquit

Wells

Contents

| | |
|---|----|
| – FY 2023 Work Plan –..... | 3 |
| Purpose: | 3 |
| Overview:..... | 3 |
| Regional Program Funding Sources and Details..... | 5 |
| Program Definitions..... | 7 |
| Program Structure..... | 8 |
| Program Mission..... | 9 |
| PROGRAM DEVELOPMENT GOALS | 10 |
| PILOT COMMUNITY OBJECTIVES FOR FY 2023 | 12 |
| PROGRAM PROGRESS: 2020 – 2022..... | 16 |

— FY 2023 Work Plan —

Purpose:

The Fiscal Year (FY) 2023 work plan lays out the vision and scope of work for SMPDC Sustainability and Resilience Program for July 2022 through June 2023, details Program accomplishments achieved during its first two years, from February 2020 through June 2022, and summarizes progress made on sustainability and resilience actions in the pilot program communities. The workplan provides an overview of the Program's structure, mission, and goals, as well as its objects and actions for the coming year.

Overview:

Coastal York County communities have long been interested in sustainability and coastal resilience issues. However, limited capacity, time, and expertise constrain each town's ability to independently implement programs and initiatives. In 2019, the towns of Kittery, Kennebunk, Kennebunkport, Ogunquit, Wells, and York sought to create a regional program to support their individual sustainability and coastal resiliency efforts. Working with the Southern Maine Planning and Development Commission (SMPDC), they created the Regional Sustainability and Resilience Program. The towns contributed funding to support the regional two-year pilot program and the creation of a Sustainability Coordinator position. Housed within and managed by SMPDC, the Sustainability and Resilience Program supports both regional and individual community efforts.

Since February 2020, SMPDC staff have been coordinating and leading sustainability and coastal resilience efforts for the six-town group with the aim of enhancing sustainability, climate preparedness, and coastal community resilience of the individual towns and of the region. They do so by:

1. Facilitating regional coordination, advocacy, and outreach
2. Collecting, synthesizing, and disseminating relevant information and tools
3. Providing expert support with planning and technical assistance

This work has occurred across many different areas of sustainability and resilience. Program highlights include:

- [Economic Resilience Assessment and Plan for Coastal York County](#): a regional economic resilience plan for mitigating the impacts of future storms and climate change in the pilot communities.
- [SMPDC Greenhouse Gas Inventory Protocol](#): a step-by-step methodology and guide for community-wide greenhouse gas emissions; Used to complete GHG inventories for Kittery and Kennebunkport.
- [Climate Ready Coast – Southern Maine](#): a regional coastal resilience planning project to collaboratively assess the impacts of climate change on our coastline and develop adaptation solutions for making the region more resilient.
- [Municipal EV Readiness Toolkit](#): an online resource for municipalities to help advance the adoption of electric vehicles. The toolkit includes a Model EV Infrastructure Ordinance that has already been utilized by several Maine communities.



- [Getting there from here: a baseline for advancing climate action in southern Maine](#): a regional sustainability and coastal resilience assessment for pilot program municipalities that identified priorities and next step actions for local and regional resilience efforts.
- [Tides, Taxes and New Tactics](#): a sea level rise assessment and planning effort that assessed local vulnerabilities to coastal flooding and identified priorities and potential strategies for increasing coastal resilience.
- [Southern Maine Solar Collaborative](#): a cooperative purchase of solar credits for five municipalities and one sewer district through the Maine Net Energy Billing Program.

The Program's successful completion of these projects and others was due in large part to securing grant funding and tapping into other external funding sources to supplement the initial funding provided by the pilot Program towns. Notably, the Program was able to leverage pilot funding as match for much of the grant and external funding received. The table on the following page provides a summary of the funds secured by the program to date.

Regional Program Funding Sources and Details: Pilot Communities Contributions and Supplemental Funding Secured by SMPDC

| Amount | Source | Project(s) | Funding Timeframe |
|---|---|---|--------------------------|
| \$285,000 | Pilot Community Contributions | Regional Program Pilot | Jan 2020 - Jun 2023 |
| Additional Funds Secured by SMPDC to Support Program Work: \$1,393,896 | | | |
| \$160,000 | Economic Development Administration Disaster Grant | Economic Resilience Plan for Coastal York County | Jan 2020 - May 2022 |
| \$130,000 | Joint Land Use Implementation Grant | Southern Maine Climate Action Planning Cohort | July 2022 - Dec 2023 |
| \$130,000 | National Fish and Wildlife Foundation Coastal Resilience Fund | Climate Ready Coast – Southern Maine | Apr 2021 - May 2023 |
| \$10,000 | Dept. of Agriculture, Conservation, and Forestry | Climate Ready Coast – Southern Maine | Jan 2022 - Jan 2023 |
| \$52,987 | Maine Coastal Communities Grant | Tides, Taxes, and New Tactics | Sept 2019 - June 2021 |
| \$51,250 | Maine Coastal Communities Grant | Development of Model Coastal Resilience Ordinance Language and Guidance | Sept 2021 - Dec 2022 |
| \$32,550 | Maine Coastal Communities Grant | Erosion and Sediment Control Checklist and Model Ordinance | Sept 2020 - Sept 2021 |
| \$56,770 | Maine Coastal Communities Grant | Low Impact Development Model Ordinance | Sept 2021 - Dec 2022 |
| \$100,000 | Community Resilience Partnership Community Action Grant | Southern Maine Climate Action Planning Cohort | May 2022 - May 2023 |
| \$75,552 | Biddeford, Kennebunk, and Kennebunkport service fees | Southern Maine Climate Action Planning Cohort | May 2022 - May 2023 |
| \$42,500 | Community Resilience Partnership Service Provider Grant | Community Resilience Partnership enrollment for Berwick, Eliot, Old Orchard Beach, and Fryeburg | April 2022 - March 2023 |
| \$22,500 | Community Resilience Partnership Service Provider Grant | Community Resilience Partnership enrollment for Wells and Ogunquit | Nov 2022 - Sept 2023 |
| \$200,000 | Community Resilience Partnership Regional Coordinator Pilot | Region One Coordinator Collaborative for the Community Resilience Partnership | Mar 2022 - Mar 2024 |
| \$50,000 | City of Saco service fee | Climate Action & Adaptation Plan | July 2022 – May 2023 |
| \$26,787 | FY23 DACF Coastal Planning Funds | Annually programmed planning funds from DACF and MCP | July 2022 - June 2023 |
| \$108,000 | Maine Silver Jackets Grant | Flood mitigation assessment for Dock Square and Lower Village | Jan 2022 - June 2023 |
| ~\$45,000 | KACTS and DOT Rural Planning Funds | Municipal EV Readiness Toolkit, Estimating On-Road Transportation Emissions in York County and others | Jan 2020 - Dec 2023 |
| \$100,000 | USDA Rural Energy for America Program | SMPDC Energy Audit Program | Apr 2021 - Mar 2024 |
| \$1,678,896 | TOTAL | | |

This additional funding, along with continued financial support from the Towns of Kittery, Kennebunk, Kennebunkport, Ogunquit, and Wells, has allowed the Program to expand and continue beyond the two-year pilot period. Program educational and outreach materials, such as webinars, trainings, and the Program newsletter, are made available to all SMPDC communities. The Program has also begun working on specific projects with communities outside the pilot group, including climate action planning in Biddeford and Saco as well as helping Fryeburg, Old Orchard Beach, Eliot, and Berwick enroll in the Community Resilience Partnership.

A factor contributing to this expansion is the increase in state and federal funding and support for climate action. On Dec. 1, 2020, the State of Maine released its four-year climate action plan, [Maine Won't Wait](#). Based on the priorities laid out in *Maine Won't Wait*, the State has allocated funding from the biennial budget, the Maine Jobs and Recovery Plan, and the Infrastructure and Jobs Act to support clean transportation, buildings and efficiency, clean energy, and climate resilience projects. The State also established the Community Resilience Partnership, providing grants and direct support to Maine's municipal governments to help them reduce carbon emissions, transition to clean energy, and become more resilient to the impacts of climate change. These sources of state and federal funding have spurred increased community interest in climate change efforts.

As the Program continues its transition from a pilot effort to a sustained, long-term program within SMPDC, it aims to continue expansion to provide climate, sustainability, and resilience services and support to all of SMPDC's communities. As part of that expansion, the Program will continue to identify and apply for grant funding for project-specific and programmatic work.

Why a regional approach?

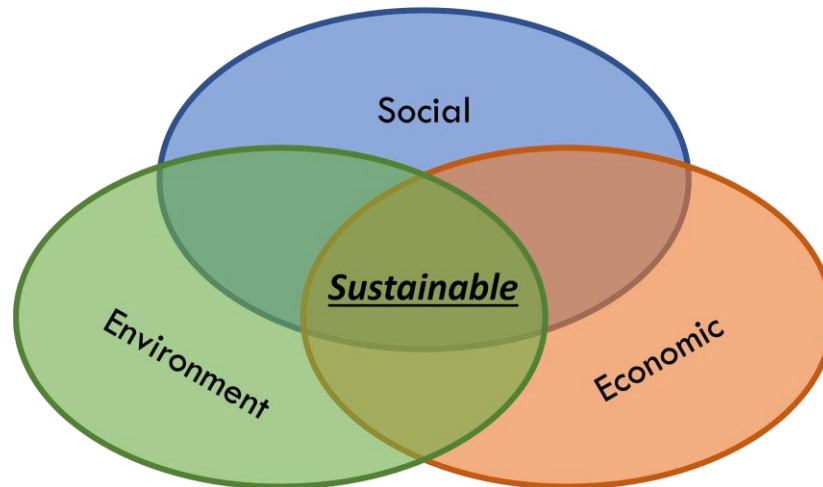
Our communities face many of the same threats and challenges regarding sustainability and coastal resiliency issues. We are all faced with strained staff capacity, limited financial resources, and lack of access to technical information and analysis. Additionally, we know that climate change does not recognize town borders and we will all be confronted by its impacts. We are creating a regional program to amplify the efforts of our individual communities and to expand our capabilities in addressing sustainability and coastal resiliency challenges. We will work toward coordinated, collective actions to promote sustainability, reduce emissions, and increase coastal resiliency within the systems we share.

We recognize that each community is at a different place in their sustainability and coastal resiliency efforts. This regional program is not intended to supplant, diminish, or supersede the authority of any of its members. All the tools, resources, and strategies developed for the program are optional for towns to adopt as they choose.

Program Definitions

SUSTAINABILITY

Sustainability is when a healthy environment, economic prosperity and social justice are pursued simultaneously to ensure the well-being and quality of life of present and future generations.



RESILIENCE

Community resilience is the capacity of a community to absorb, withstand, recover from and adapt to changing conditions and disturbances while sustaining key functions, structures, and performance. It involves all dimensions of a system, including social, built, and natural environments within a community.

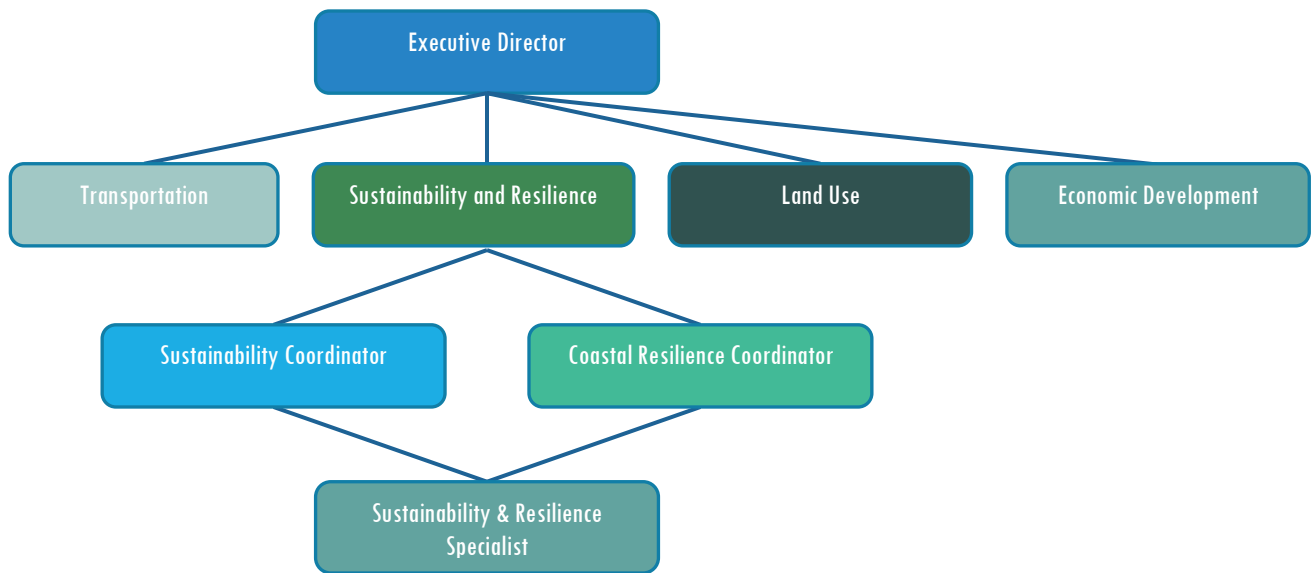
Coastal resilience refers specifically to disasters and events arising from coastal hazards such as sea level rise, increased flooding, more frequent and intense storm surges, and shoreline erosion. It can be achieved by minimizing vulnerabilities through adaptation and mitigation planning.

Climate resilience is the ability to anticipate, prepare for, and respond to hazardous events, trends, or disturbances related to climate. Creating climate resilience consists of mitigation (*i.e.* greenhouse gas emissions reductions) and adaptation to climate change impacts.



Program Structure

At its inception in 2020, the Program was housed under the SMPDC Land Use and Planning Department. However, because the program's work intersects with Transportation and Economic Development in addition to Land Use, the Program has shifted to report directly to SMPDC's Executive Director. Grant funding allowed SMPDC's Senior Planner to devote more of her time to the Program, taking on the role of Coastal Resilience Coordinator. In 2022 SMPDC created the role of Sustainability and Resilience Specialist to support ongoing Program activities and help pursue new opportunities to expand the Program.



Program Mission

To foster more sustainable and resilient communities by leveraging regional collaboration to enhance the effectiveness of local government sustainability and resilience action.

Previous mission:

To foster more sustainable and resilient communities *in coastal York County* by leveraging regional collaboration, enhancing the effectiveness of local government sustainability and resilience action.

Why the change?

Over the past two years, specific projects and activities (such as the Southern Maine Solar Collaborative and Climate Ready Coast Southern Maine) have allowed the program to assist communities outside of the original six pilot program communities. It is the goal of SMPDC to provide sustainability and resilience assistance to all interested SMPDC communities, and to set an example for other regions throughout Maine and New England. For this reason, we removed the reference to coastal York County in the Program mission.



PROGRAM DEVELOPMENT GOALS

How have program goals changed?

The four overarching goals of the Program – Collaboration, Assessment, Integration, and Action – remain unchanged from the original Program workplan. The goals have been updated to remove references to coastal York County to reflect the updated mission to support all communities in SMPDC’s region interested in sustainability and resilience. The objectives under each goal have been updated to remove objectives that have been achieved in the past two years. New objectives are indicated in bold.

1. **Collaboration:** Create a collaborative network to share knowledge and coordinate efforts on sustainability, community resilience, and climate action.

Objectives

- 1.1. Promote intra- and inter-community collaboration on sustainability and climate resilience efforts.
- 1.2. Broaden public understanding of regional and community sustainability, resilience, and climate action.
- 1.3. **Coordinate with the State’s Community Resilience Partnership to enhance climate action assistance to all SMPDC member communities and the broader southern Maine region.**

2. **Assessment:** Assist with evaluation of climate change and coastal issues, priority needs for addressing impacts, and periodic progress on sustainability and resilience initiatives.

Objectives

- 2.1. Track status and progress on sustainability and resilience for Program towns and other SMPDC communities to monitor and evaluate sustainability and resilience efforts in communities and the region.
- 2.2. Assist with evaluation of climate impacts in individual municipalities and the broader southern Maine region.
- 2.3. Support towns with assessing impacts of relevant and priority climate hazards, such as sea level rise, coastal flooding, and shoreline change.

3. **Integration:** Support communities with incorporating sustainability, resilience, and climate change considerations into community operations, culture, planning, and decision-making.

Objectives

- 3.1 Enhance the sustainability and resilience literacy of municipal staff and the public, enabling them to make informed decisions in their work and personal lives.
- 3.2 Facilitate the use of the best available coastal and climate science in municipal resilience planning efforts.
- 3.3 Aid towns with integrating resilience and vulnerability considerations and criteria in town planning and decision making.
- 3.4 Promote land use strategies that protect people, property, and the natural environment from existing and anticipated future climate impacts.

4. **Action:** Increase the climate resilience of southern Maine by coordinating and supporting capacity-building for climate change mitigation and adaptation planning and strategy implementation.

Objectives

- 4.1 Empower each community to increase and expand their individual sustainability and resilience efforts through education and outreach.
- 4.2 Enhance communities' climate mitigation capacity by providing technical assistance on greenhouse gas emissions inventories and emissions reduction strategy development.
- 4.3 Coordinate regional climate mitigation and adaptation initiatives that harness regional strengths and leverage resources.
- 4.4 Provide technical support to communities wishing to pursue climate action and resilience planning.
- 4.5 Assist towns with implementation of climate resilience (mitigate and adaptation) efforts.
- 4.6 **Connect municipal climate action priorities to state and federal funding opportunities such as those in *Maine Won't Wait*.**
- 4.7 **Build a stronger connection between communities, SMPDC, and the county and state Emergency Management Agencies.**



PILOT COMMUNITY OBJECTIVES FOR FY 2023

The Work Plan for Fiscal Year (FY) 2023 was developed by SMPDC based on the Program's ongoing climate work and with input from each of the five pilot towns based on their needs and priorities. The objectives and action items for the pilot communities were designed to reflect the most pressing priorities of individual municipalities with an emphasis on those which are overlapping across multiple communities to achieve a true regional approach. While this Work Plan serves as a guide for programmatic efforts, it is considered a living document that can be updated and adapted as necessary. Program staff will work to ensure efforts are aligned with needs of the region as well as the needs of individual municipalities. New and evolving priorities for pilot communities in FY 2023 include:

- Climate action planning
- Coastal water quality and watershed management
- Building coastal resilience through zoning and land use regulations
- Food waste diversion
- Electric vehicle (EV) infrastructure
- Pesticides and sustainable pest management
- Sea Level Rise adaptation strategies
- Implementation of actions from regional studies & assessments

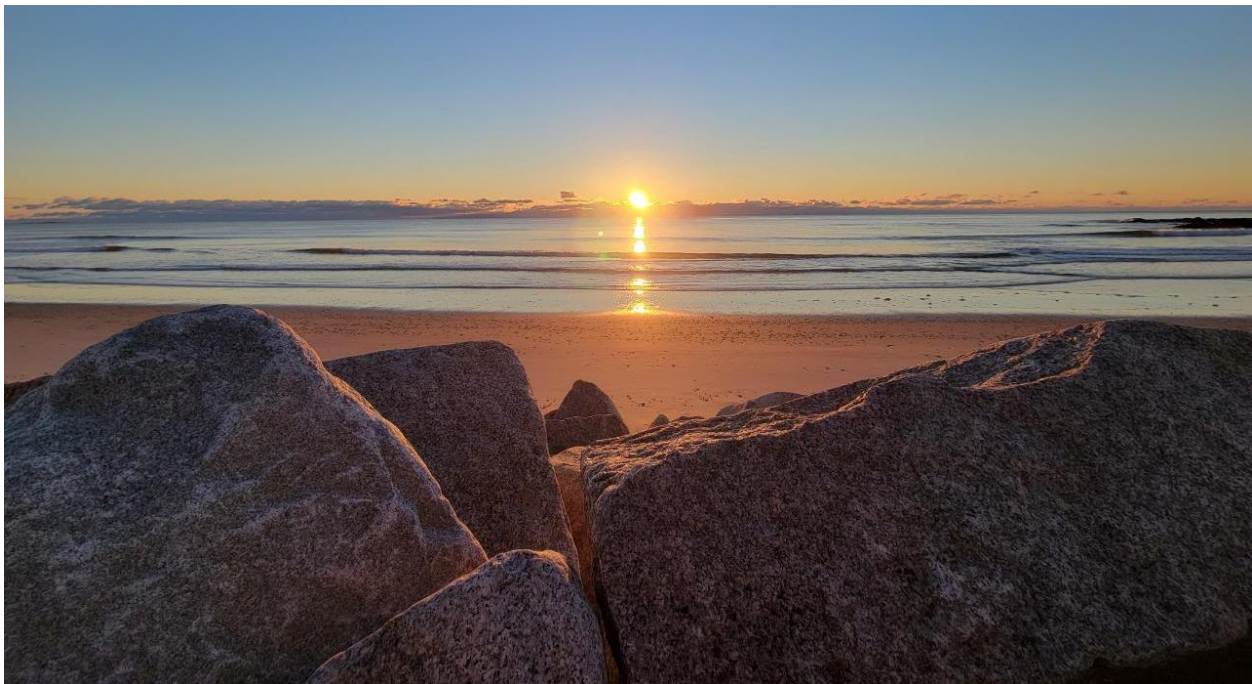
Objectives

1. Continue to enhance inter-community communication and collaboration on sustainability and resilience efforts

- 1.1. Host regular meetings of pilot program communities to discuss program updates and projects
- 1.2. Disseminate a bi-monthly newsletter to share program progress, individual town updates, informational resources, and opportunities
- 1.3. Lead topic-specific workshops as needed to help town staff and community members address pressing issues in sustainability and resilience (including a workshop on Coastal Water Quality and Watershed Management issues and needs)

- 1.4. Participate in the Regional Coordinator Pilot of the Community Resilience Partnership to provide enhanced technical assistance and coordination on climate change and community resilience topics to pilot communities and the southern Maine region
2. Assist communities with climate action planning for their municipality and community
 - 2.1. Manage the Climate Action Plan Cohort and help the communities of Kennebunk, Kennebunkport, Kittery, and Biddeford adopt and begin to implement local climate action plans
 - 2.2. Assist the Towns of Ogunquit and Wells with enrolling in the Community Resilience Partnership and applying for a Community Action Grant to increase community resilience
 - 2.3. Continue to provide technical assistance on greenhouse gas inventories, including updating the Southern Maine Greenhouse Gas Inventory Protocol
3. Support coastal resilience planning and coastal hazard evaluation in individual municipalities and the broader coastal York County region.
 - 3.1. Lead the Climate Ready Coast – Southern Maine project to create a regional coastal resilience plan for southern Maine with an emphasis on nature-based solutions for coastal adaptation
 - 3.2. Provide technical support on priority coastal issues (i.e. sea level rise, coastal flooding, shoreline erosion, marsh migration, groundwater intrusion), impacts, and assessment methods by connecting towns with experts and coordinating training on information, tools, and resources
 - 3.2.1. Facilitate the use of best available coastal and resilience science in municipal planning efforts by providing research assistance and direct technical assistance
4. Help towns expand sustainable transportation in their communities and strengthen regional collaboration on transportation initiatives
 - 4.1. Assist towns in supporting EV adoption through updates of the Municipal EV readiness Toolkit
 - 4.2. Support the growth of regional EV charging infrastructure
 - 4.2.1. Aid towns in finding and pursuing funding opportunities for EV charging stations
 - 4.2.2. Coordinate between communities to ensure a robust, well-publicized charging network
 - 4.3. Collaborate with regional transportation organizations to ensure sustainability and resilience are integral parts of regional transportation efforts
 - 4.3.1. Coordinate with the Kittery Area Comprehensive Transportation System MPO and other regional transportation projects to identify overlapping priorities and potential areas of collaboration (ex. Regional EV public charging network analysis)
 - 4.3.2. Act as a community stakeholder in Maine Clean Communities Coalition and Drive Electric Maine
 - 4.3.3. Continue tracking On-road transportation emissions in York County to understand transportation emission patterns, causes, and impacts

5. Support towns and the region with the implementation of sustainability and coastal resilience strategies and projects.
 - 5.1. Research and advise on the creation of new sustainability and coastal resilience initiatives and projects
 - 5.2. Analyze and recommend municipal funding strategies to support implementation of individual and regional strategies
 - 5.3. Support attainment of external resources to fund individual and regional actions
 - 5.4. Coordinate communication between town staff and committees charged with sustainability, climate, and coastal resilience related goals to ensure actions align with municipal priorities
 - 5.4.1. Host 'Planner Roundtable' events to bring municipal planners together to share knowledge and support implementation across the region
 - 5.5. Promote amendments to existing – and the creation of new – policies, zoning, and regulations that advance the towns' sustainability and coastal resilience goals
 - 5.6. Assist communities with the implementation of model ordinance language to enhance community resilience and climate action), including Model Coastal resilience ordinance, Low Impact development, EV infrastructure, and Erosion and Sediment Control Standards



| MILESTONES | Communities | | | | | | Summer '22 | Fall '22 | Winter '22/23 | Spring '23 | Summer '23 | Fall '23 |
|---|-------------|----------|-------|-----------|---------------|-------|------------|----------|---------------|------------|------------|----------|
| | Kittery | Ogunquit | Wells | Kennebunk | Kennebunkport | Other | | | | | | |
| Program Work Plan | ✓ | ✓ | ✓ | ✓ | ✓ | ✓ | | | | | | |
| CAP Cohort (& climate action plan for Saco) | | | | | | | | | | | | |
| ➤ Greenhouse gas inventories & targets | | | | | | | | | | | | |
| ➤ Vulnerability assessment | ✓ | | | ✓ | ✓ | ✓ | | | | | | |
| ➤ Goals & strategies | | | | | | | | | | | | |
| ➤ Climate Action Plan | | | | | | | | | | | | |
| Climate Ready Coast – Southern Maine: regional coastal resilience planning project | | | | | | | | | | | | |
| ➤ Vulnerability assessment | | | | | | | | | | | | |
| ➤ Priority vulnerable areas | ✓ | ✓ | ✓ | ✓ | ✓ | ✓ | | | | | | |
| ➤ Priority adaptation strategies & nature-based solutions | | | | | | | | | | | | |
| ➤ Regional resilience plan | | | | | | | | | | | | |
| Informational Workshops | | | | | | | | | | | | |
| ➤ Coastal water quality & watershed mgmt | ✓ | ✓ | ✓ | ✓ | ✓ | ✓ | | | | | | |
| ➤ Workshop on emerging priority topic | | | | | | | | | | | | |
| Co-lead Regional Coordinator Collaborative for Community Resilience Partnership (CRP) | ✓ | ✓ | ✓ | ✓ | ✓ | ✓ | | | | | | |
| Enroll communities in CRP | | ✓ | ✓ | | | | | | | | | |
| 'Silver Jackets' Project: Flood Assessment for Dock Square and Lower Village | | | | ✓ | ✓ | | | | | | | |
| Assistance with implementation of coastal resilience & LID model ordinance language | ✓ | ✓ | | ✓ | ✓ | | | | | | | |
| Planner's roundtable meetings | ✓ | ✓ | ✓ | ✓ | ✓ | ✓ | | | | | | |
| Tracking of on-road transportation emissions | ✓ | ✓ | ✓ | ✓ | ✓ | ✓ | | | | | | |
| Regional EV charging station siting assessment | ✓ | ✓ | ✓ | ✓ | ✓ | ✓ | | | | | | |

PROGRAM PROGRESS: 2020 – 2022

Since 2020, the Program successfully completed all the pilot objectives laid out in the 2020 Work Plan. Efforts to meet the pilot program objectives are described below:

Pilot objectives and progress

1. Establish a baseline of sustainability and resilience efforts and needs in individual communities and the Coastal York County region

To establish a baseline of sustainability and coastal resilience efforts and needs in individual communities and the coastal York County region, the Program conducted a comprehensive assessment of individual town and regional action undertaken to-date. Each of the Program's six towns was evaluated on identical sustainability and resilience strategies within twelve categories, with strategies grouped into 22 indicators that reflect broadscale sustainability and coastal resilience goals that are relevant to this region. By comparing and synthesizing the results from the individual assessments of each town, the regional assessment identified:

- Common strategies for success that enable progress on actions.
- Common barriers and challenges that limit the towns' ability to implement actions.
- Regional priorities and next steps identified from common priorities among the towns' future efforts that could benefit from a regional approach.

Findings from the regional assessment are summarized in [Getting there from here: A Baseline for Advancing Climate Action in Southern Maine](#). This analysis and the identified regional priorities have guided the current work of the SMPDC Regional Sustainability and Resilience Program.

2. Enhance inter-community communication and collaboration on sustainability and coastal resilience efforts

Program staff have led a multitude of ongoing and specific efforts to increase communication and collaboration across municipalities, including:

- Hosted regular meetings of pilot program communities to discuss program updates and projects
- Disseminated a [bi-monthly newsletter](#) to share program progress, individual town updates, informational resources, and opportunities
- Led topic-specific workshops for municipal staff and community members (ex. Food Waste, Municipal Solar, Fleet Electrification, Groundwater Rise, State Climate Action Plan, and Municipal Climate Action Planning in Maine)
- Developed and delivered various presentations on climate change to local community groups (ex. Kittery Climate Action Now, Southern Maine Planetears).
- Led project-specific presentations to municipal staff, elected officials, and board members to share progress and garner support for project implementation (ex. Tides, Taxes and New Tactics, Greenhouse gas inventories for Kittery and Kennebunk, Economic Resilience Assessment for Coastal York County).

- Participating in the Regional Coordinator Pilot of the Community Resilience Partnership to provide enhanced technical assistance and coordination on climate action in southern Maine communities.

3. Help each community develop the capacity to complete community wide greenhouse gas emissions inventories

To help communities conduct greenhouse gas (GHG) inventories, SMPDC developed the [Greenhouse Gas Inventory Protocol for Southern Maine Cities and Towns](#). The protocol provides step-by-step guidance for completing a community-wide GHG inventory. This inventory estimates the amount of GHG emissions associated with community sources and activities, meaning those of a municipality's residents, workforce, visitors, and economy. While applicable to most small cities and towns, the protocol takes special consideration of the data sources and emissions factors applicable to Maine communities.

SMPDC staff used the GHG inventory protocol to create 2019 community-wide GHG inventories for the Town of Kittery and the Town of Kennebunkport. These inventories are now being used to help develop climate action plans for each community.

4. Help towns expand sustainable transportation in their communities and strengthen regional collaboration on transportation initiatives

The Program has worked closely with the SMPDC Transportation department to conduct planning, outreach, and regional coordination on [sustainable transportation](#) issues, including:

- [Municipal EV Readiness Toolkit](#): The toolkit, developed in partnership with Maine Clean Communities, is an online resource for municipalities to help advance the adoption of electric vehicles. It includes a [Model EV Infrastructure Ordinance](#) that has already been utilized by several Maine communities to encourage EV infrastructure development.
- [Roadway Design Standards](#): Program staff contributed to standards that can be incorporated into local Subdivision and Zoning Ordinances
- [Estimating On-Road Transportation Emissions in York, County](#): To assist York County communities in estimating their on-road transportation (ORT) emissions (emissions from vehicle travel but not from air, marine, or off-road transport), program staff pioneered a methodology to estimate ORT emissions for all towns and cities in York County. ORT emissions estimates can help municipalities set emissions reduction targets and prioritize emission mitigation strategies.

5. Assist with the evaluation of coastal hazards and associated impacts in individual municipalities and the broader coastal York County region.

The Program has led, and continues to lead, a number of grant-funded projects aimed at evaluating impacts of coastal hazards, including sea level rise, assessing local vulnerabilities, and developing locally-appropriate adaptation and resilience strategies to address those vulnerabilities and increase the resilience of the natural, built, and social dimensions of coastal York County. Specific projects include:

- [Tides, Taxes, and New Tactics: Planning for Sea Level Rise and Coastal Adaptation](#): A regional project that investigated municipal-level economic and social impacts of sea level rise and storm surge hazards and develop locally-relevant adaptation and resiliency planning strategies that address local and regional vulnerabilities. Participating communities: York, Kennebunk, and Wells.
- [Climate Ready Coast – Southern Maine](#): A 2-year regional planning project aimed at developing a regional coastal resilience plan for a ten-municipality region in southern Maine through collaborative engagement of municipalities, local land trusts, regional conservation organizations, and state and federal natural resource agencies. The project is evaluating local resilience needs, conducting a comprehensive assessment of coastal hazards and impacts in the region, and identifying and prioritizing strategies for protecting the region's natural systems thereby reducing

the region's socio-economic vulnerabilities to coastal hazards and climate change. It will culminate in the state's first Regional Coastal Resilience Plan.

- [Economic Resilience Assessment and Plan for Coastal York County](#): Planning study investigating the impacts of coastal storms and future sea level rise on the York County coastal communities of Kennebunk, Kennebunkport, Kittery, Ogunquit, Wells, and York. The study culminated in the development of regional economic resilience plan that outlines impacts, vulnerabilities, and strategies for enhancing economic resilience to coastal storms and climate change, and GIS-based decision-support tools including a StoryMap that summarizes results of the study and a web-based GIS application for investigating data and results of the vulnerability assessment.
- [Coastal Hazard Overlay Zone and Development Standards for Kittery's Floodplain Management Ordinance](#): Supporting the Town of Kittery with developing a coastal hazard overlay zone and associated development standards and resilience measures that account for storm surge and future sea level rise.
- [Lower Village and Dock Square Flood Assessment Project](#): Funded by the Maine Silver Jackets Team with technical support from the Army Corps of Engineers, the project is undertaking a site-specific assessment of flood risk to buildings and infrastructure in the Lower Village and Dock Square economic hubs of Kennebunk and Kennebunkport. Specific flood mitigation and adaptation strategies are being developed to reduce risk to the area.

6. Support towns and the region with the implementation of sustainability and coastal resilience strategies and projects.

Program staff have worked closely with pilot program municipalities and other communities to undertake specific actions to increase sustainability and resilience, including:

- [Southern Maine Solar Collaborative](#): Program staff led a group of 5 municipalities (including pilot program communities Kittery, Kennebunk, and Kennebunkport) through a joint procurement process for off-site solar energy for municipal electricity use. The program also assisted the Town of Wells in their solar RFP process.
- [Local Climate Action Planning Cohort](#): SMPDC is leading the communities of Biddeford, Kennebunk, Kennebunkport, and Kittery through a collaborative cohort process to develop a unique local climate action plan for each community.
- [Model Coastal Resilience Ordinance Language](#): Program staff led the development of model coastal resilience ordinance language and associated guidance document that offers Maine's coastal municipalities a roadmap and guidance for integrating coastal hazards, climate change impacts, and resilience measures in their zoning and development standards to better protect people, property, and the community at-large from evolving risk.
- [Erosion and Sedimentation Control Standards](#): A regional checklist and standards document for Sediment and Erosion Control Plans for development sites to comply with requirements of the new municipal MS4 (Municipal Separate Storm Sewer Systems) permit and inform municipal ordinance revisions to ensure sound stormwater management, minimize soil pollution, and protect the region's water quality.
- [Model Ordinance for Low Impact Development \(LID\) Strategies](#): A model ordinance outlining LID measures and standards to protect, maintain and enhance the public health, safety and general welfare by establishing minimum requirements and procedures to minimize the adverse effects of new and redevelopment on the environment. Developed to assist municipalities with addressing the requirements of the 2022 General Permit for MS4 communities.

- SMPDC staff provided technical assistance for several successful grants for funding municipal sustainability and resilience actions, including the installation of EV charging stations in Wells and Kittery, the securing of grant funding for coastal resilience improvements to Cape Porpoise Pier, and the development of climate action plans in Kittery, Kennebunk, Kennebunkport, and Biddeford.

