

Vulnerability Assessment Results

November 24, 2020

Alex Gray

Water Resources Scientist

GIS Analyst

FAA UAS (Drone) Pilot



GEI



Consultants

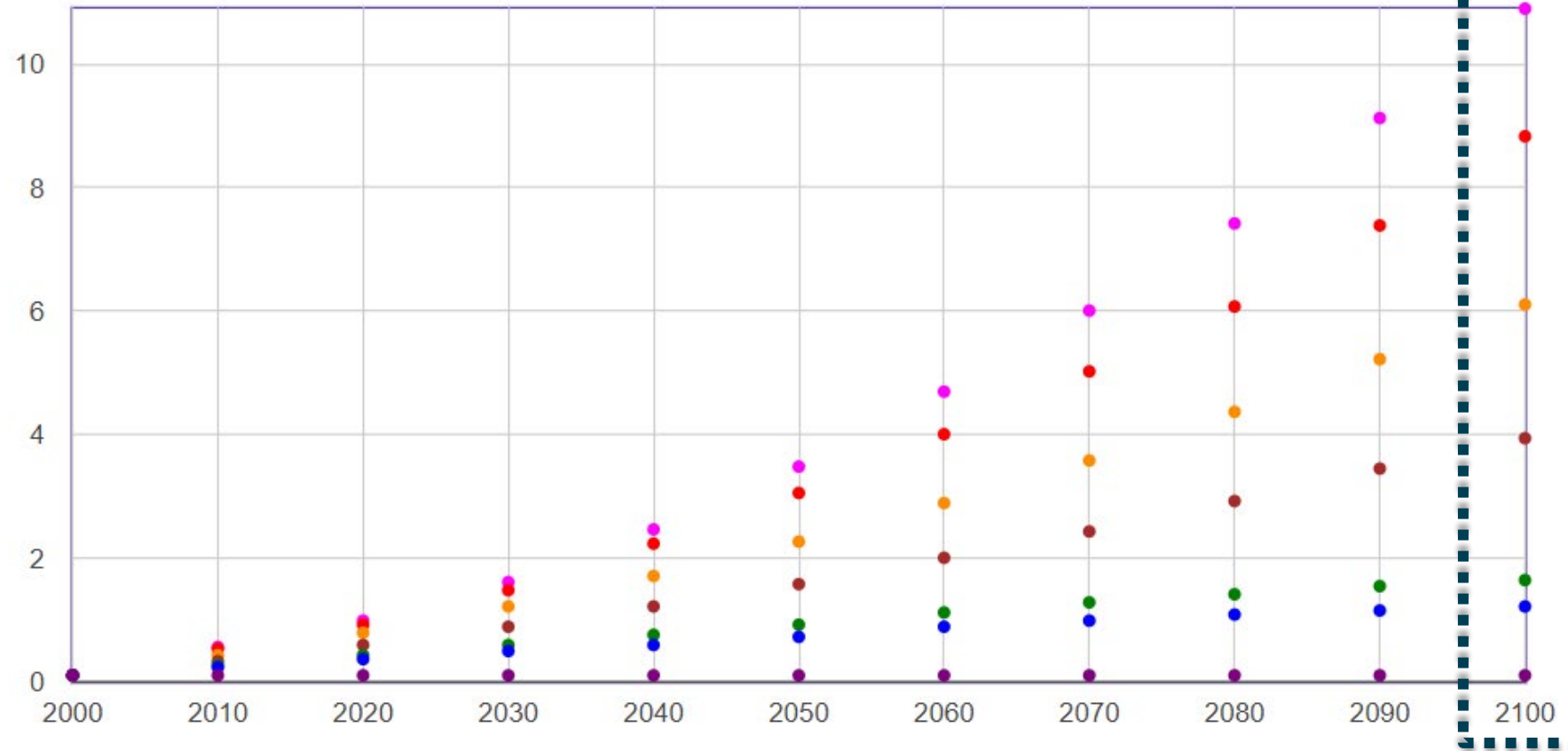
Assessment Overview

- Estimate the total assessed building and land values that are located within inundation polygons
- Identify populations and demographics of people located within inundation polygons
- Identify town zoning districts, assets, and roads that are located within inundation polygons



Inundation Polygons

- The inundation polygons used were shapefiles developed by Maine Geological Survey
- Represent boundaries of the highest astronomical tide in the year 2100 using sea level rise amounts projected by NOAA (2017)



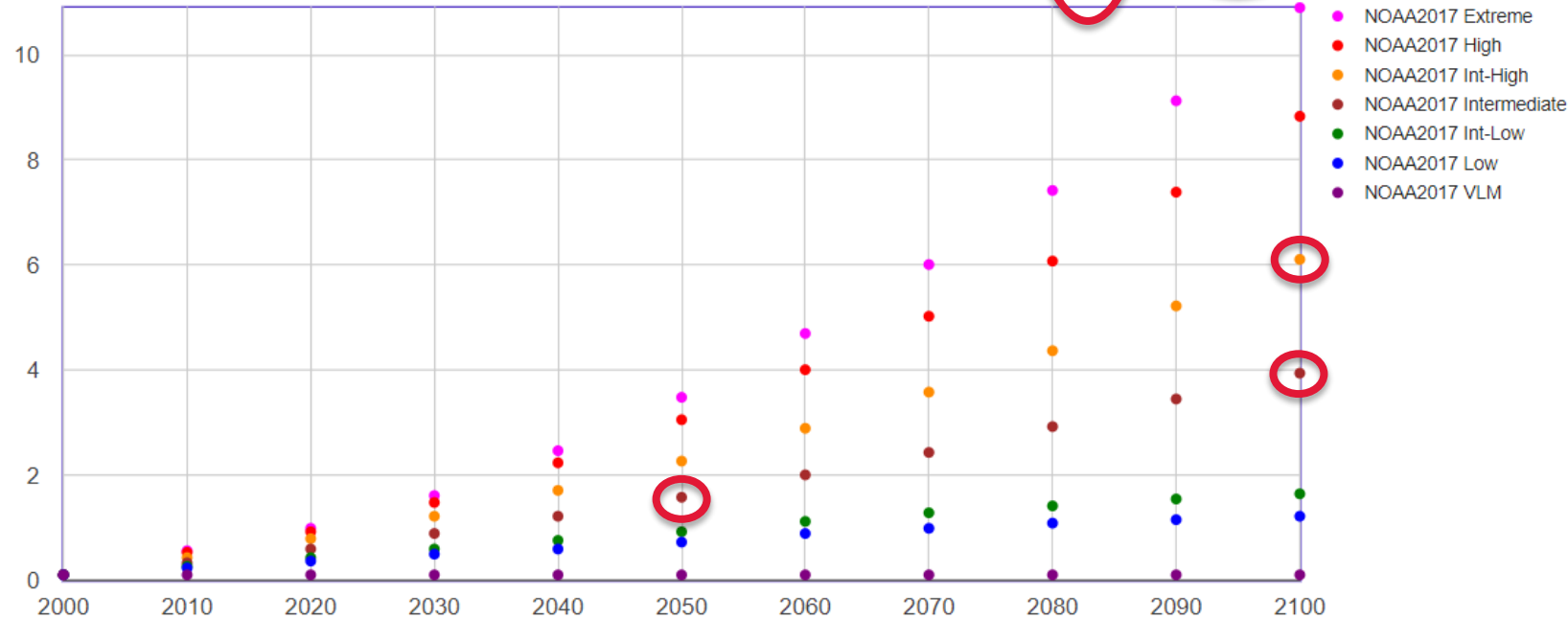
Inundation Polygons

The six sea level rise amounts are:

- 1.2 ft – Low
- 1.6 ft – Intermediate-Low
- 3.9 ft – Intermediate
- 6.1 ft – Intermediate-High
- 8.8 ft – High
- 10.9 ft – Extreme

Scenarios for PORTLAND
 NOAA2017 VLM: 0.0000 feet/yr
 All values are expressed in feet

Year	NOAA2017 VLM	NOAA2017 Low	NOAA2017 Int-Low	NOAA2017 Intermediate	NOAA2017 Int-High	NOAA2017 High	NOAA2017 Extreme
2000	0.10	0.10	0.10	0.10	0.10	0.10	0.10
2010	0.10	0.24	0.27	0.33	0.43	0.53	0.56
2020	0.10	0.37	0.43	0.60	0.79	0.93	0.99
2030	0.10	0.50	0.60	0.89	1.22	1.48	1.61
2040	0.10	0.60	0.76	1.22	1.71	2.24	2.47
2050	0.10	0.73	0.93	1.58	2.27	3.06	3.48
2060	0.10	0.89	1.12	2.01	2.89	4.01	4.70
2070	0.10	0.99	1.29	2.43	3.58	5.03	6.01
2080	0.10	1.09	1.42	2.93	4.37	6.08	7.42
2090	0.10	1.15	1.55	3.45	5.22	7.39	9.13
2100	0.10	1.22	1.65	3.94	6.11	8.83	10.90



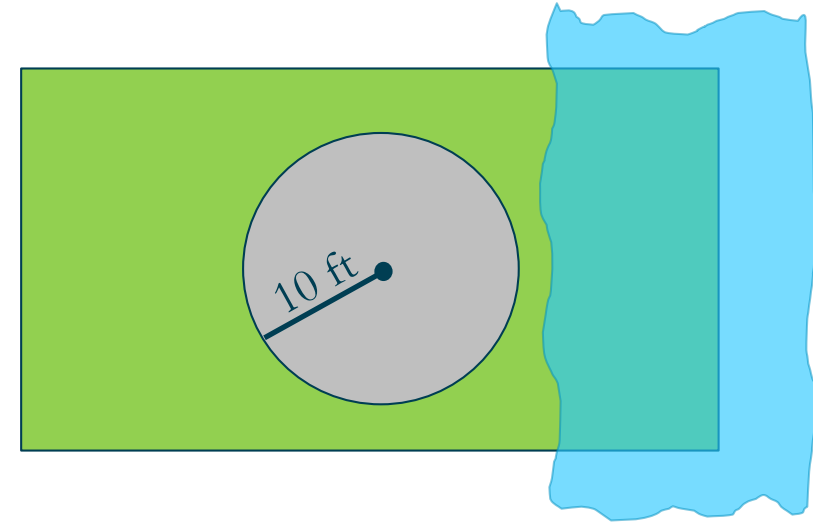
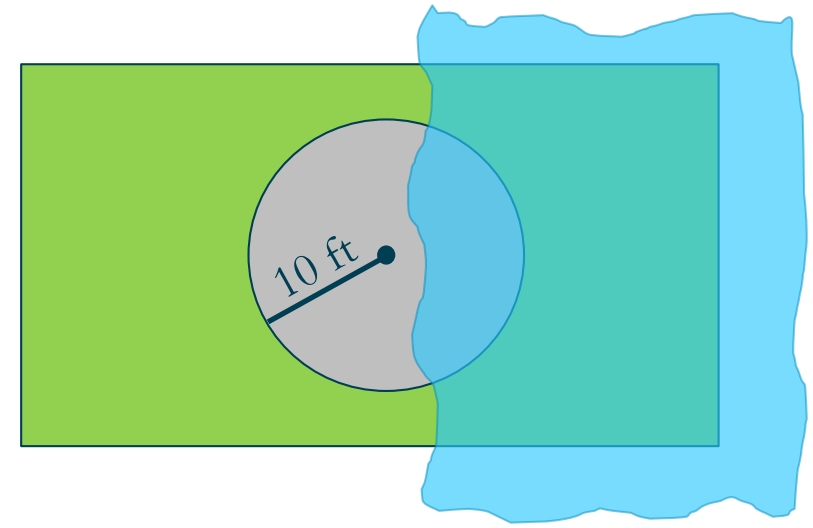
METHODS



Building and Land Values at Risk

- Building “footprints” were established using a parcel centroid (center location) buffered by 10 ft
- If a parcel’s “footprint” was intersected by an inundation boundary, both the land value and building value were considered at risk to that flooding scenario
- If a parcel was intersected but its “footprint” was not, only the land value was considered at risk to that flooding scenario and only at the proportional value of the area that was inundated:

$$\text{Impacted Land Value} = \text{Total Land Value} \times (\text{Inundated Parcel Area} / \text{Total Parcel Area})$$



Building and Land Values at Risk

- Values across each town were summed to estimate total value of impacted buildings and land
- The number of parcels within each town were also summed
- If data were available, impacted values were divided by occupancy type (e.g., single-family home, municipal, store/shop, etc.)
- Impacted parcel values were also summed for each Census Block Group based on where the parcel centroid was located

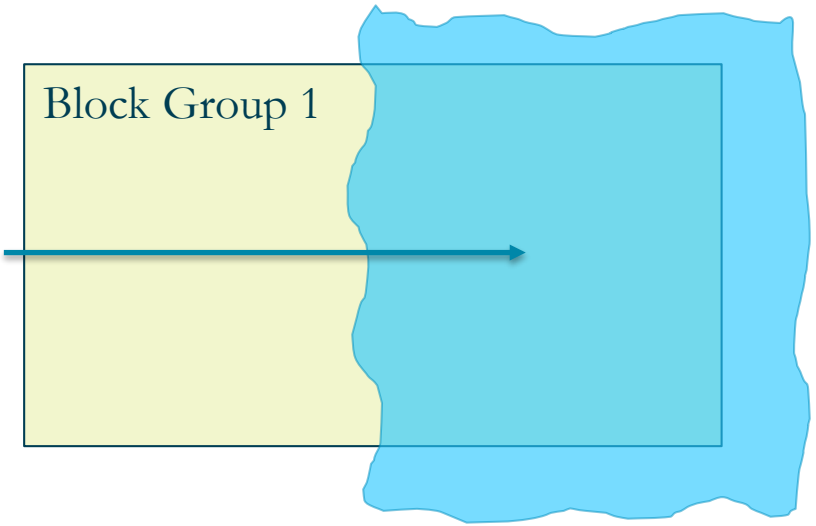
Parcel	Building and Land Impacted (1.6 ft SLR)	Land only Impacted (1.6 ft SLR)	Building and Land Impacted (3.9 ft SLR)	Land only Impacted (3.9 ft SLR)	Building and Land Impacted (6.1 ft SLR)	Land only Impacted (6.1 ft SLR)
1						
2						
3...						
Total						



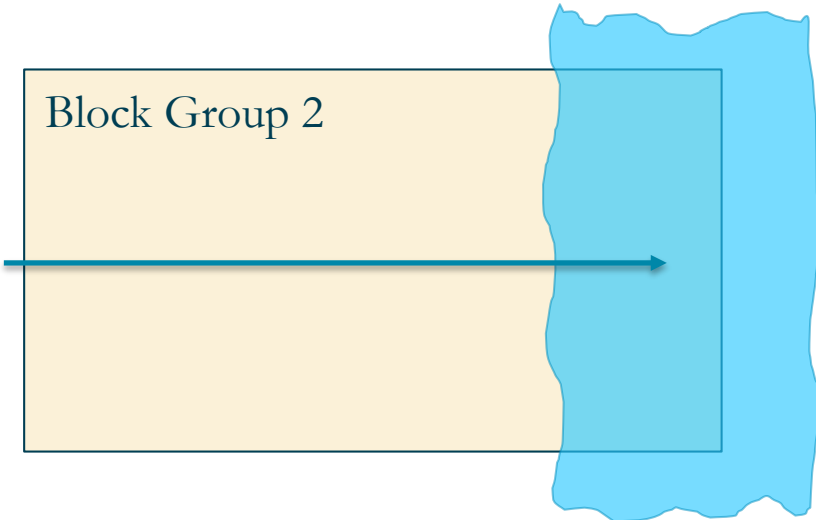
Populations at Risk

- Used US Census block groups and data from American Community Survey (2018) to determine populations and demographics of people located within inundation polygons.
- A proportion of the block group was calculated based on the area covered by the inundation polygon

50% of population impacted

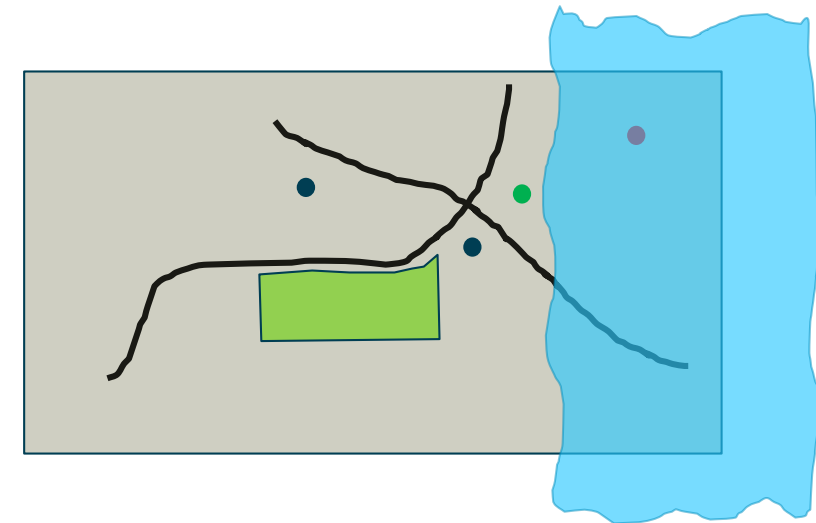
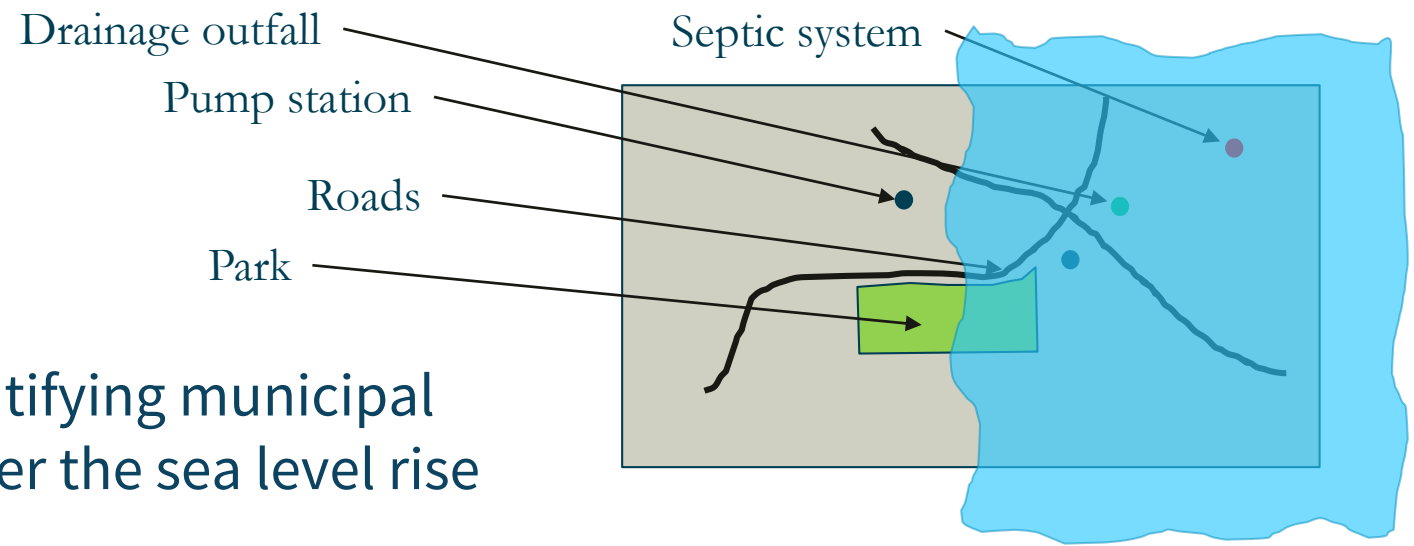


25% of population impacted



Assets at Risk

- Used GIS data provided by towns to identifying municipal assets and infrastructure inundated under the sea level rise scenarios
- Inundation Extent:
 - Point shapes (e.g., septic system locations, drainage outfalls, pumps, etc.)
 - The number of each point asset inundated under each scenario
 - Line shapes (e.g., roads, sewer pipes, gravity mains, etc.)
 - The length of each line asset inundated under each scenario
 - Polygon shapes (e.g., parks, sidewalks, historic districts, etc.)
 - The area of each polygon asset inundated under each scenario



RESULTS



Assumptions and Their Impact

- Parcel centroids represent the geometric “middle” of a polygon. In some cases that might be in an area where no one would construct a building. Using our methodology however the “building” would be classified as at risk if the inundation boundary crossed it.
 - Buffered centroids do not accurately represent a building footprint
- Condominiums were set up differently in town GIS files
 - Each condo was its own parcel with a building and land value, and the actual land polygon shared by the condo complex did not have a value (underestimate land value at risk)
 - Each condo was its own parcel with only a building value and the land value for the entire condo complex was assigned to the land parcel shared by the condo complex (more accurate but depends where the centroid is located)



Assumptions and Their Impact

- All sea level rise inundation polygons are based on the Highest Astronomical Tide
 - Most extreme inundation extent for each sea level rise amount
- There were many parcels that did not contain any buildings. If an inundation polygon touched a buffered centroid of a parcel that did not have a building, the maps in the report will show these parcels as red (meaning “building and land”) but only land values were available.
 - Once a buffered centroid was touched by an inundation polygon the entire parcel value was impacted whether a building value was present or not.


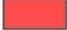



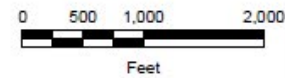
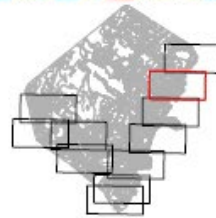
Assumptions and Their Impact



LEGEND:

1.6 FT SEA LEVEL RISE

-  NO IMPACT
-  BUILDING AND LAND
-  LAND ONLY



Vulnerability Assessment for the Towns of
York, Wells, and Kennebunk,
Maine
Southern Maine Planning & Development Commission
Saco, Maine

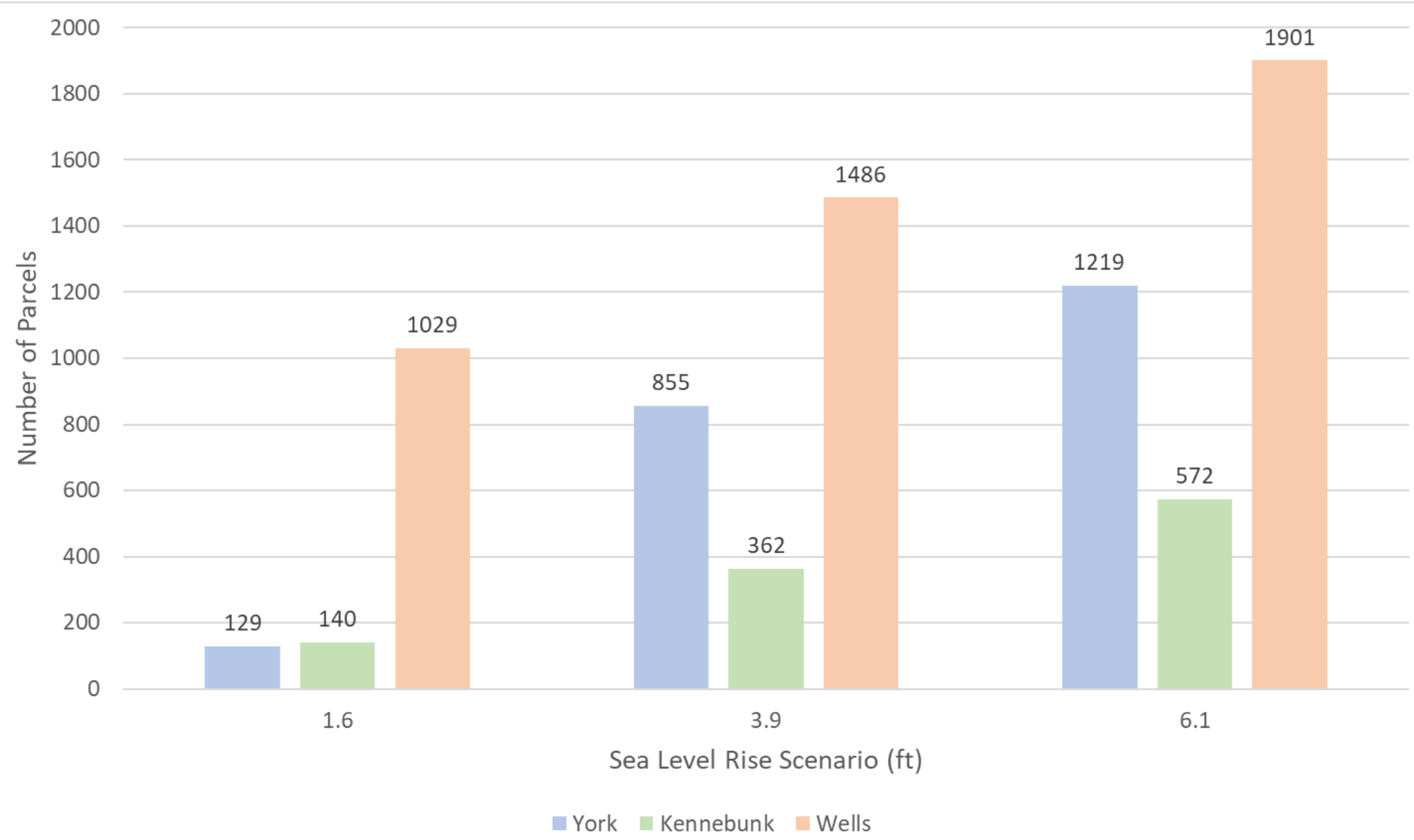


PARCEL IMPACTS FROM
1.6 FT SEA LEVEL RISE
TOWN OF YORK

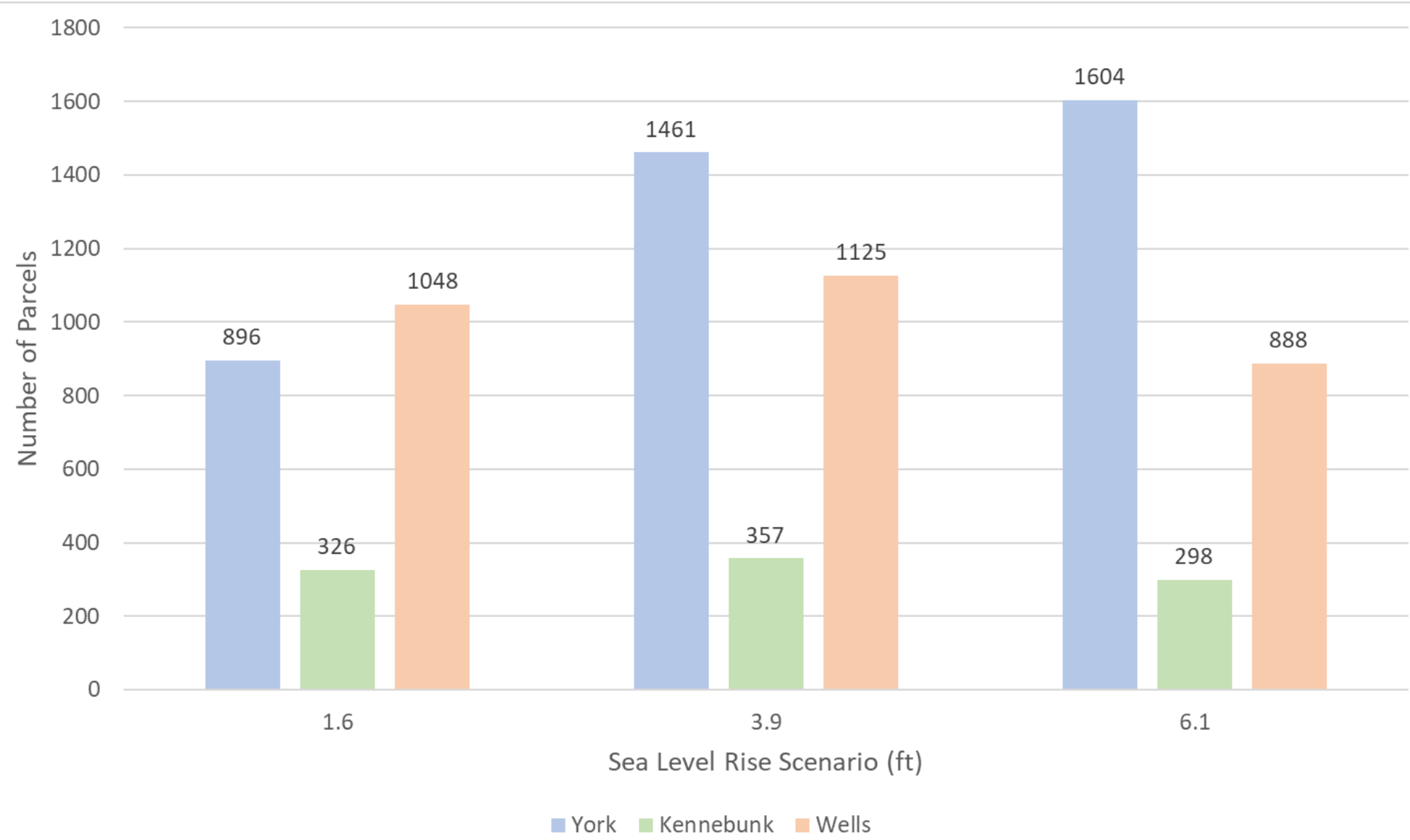
Project 2000925 September 2020 Fig. 10



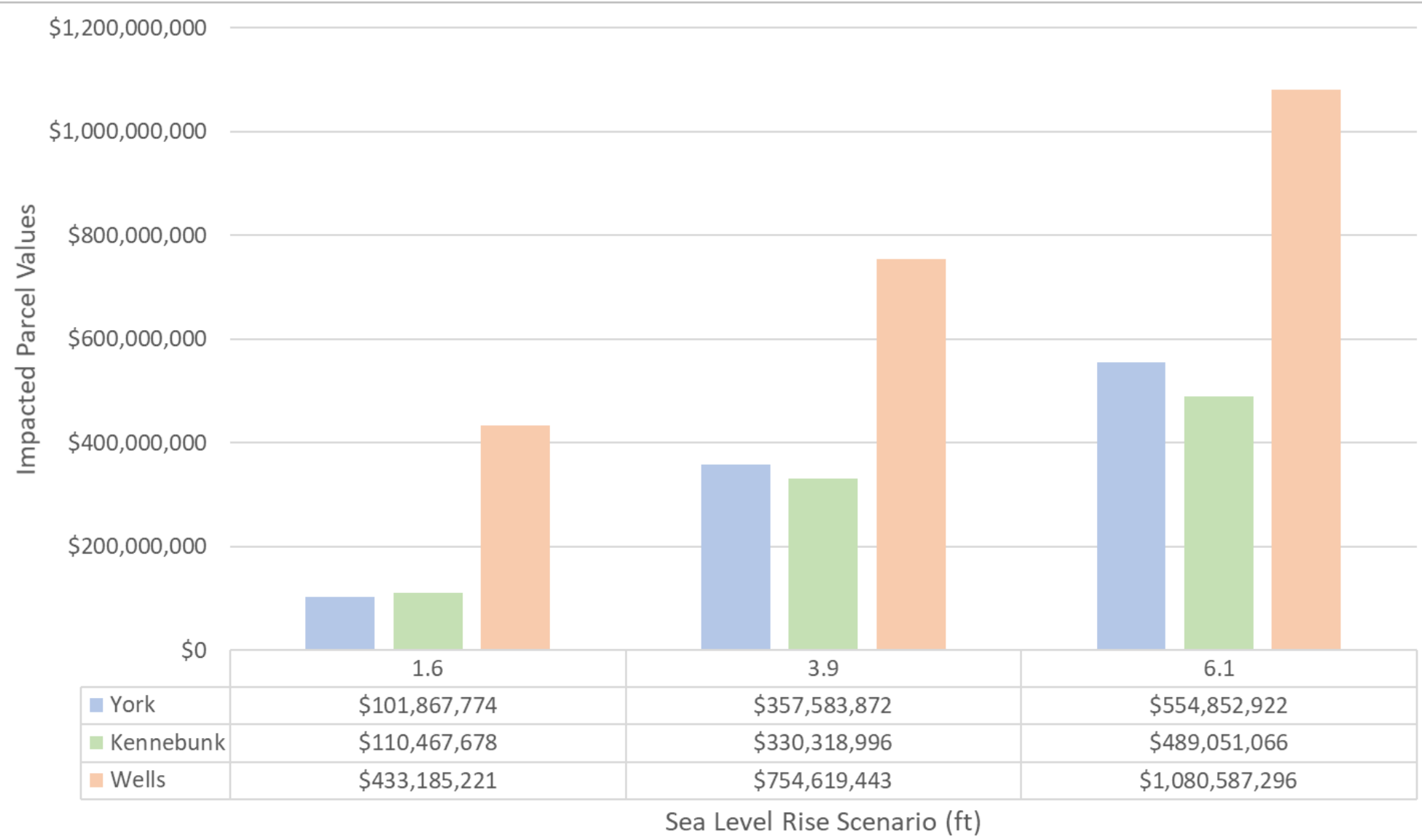
Parcels with Building and Land at Risk



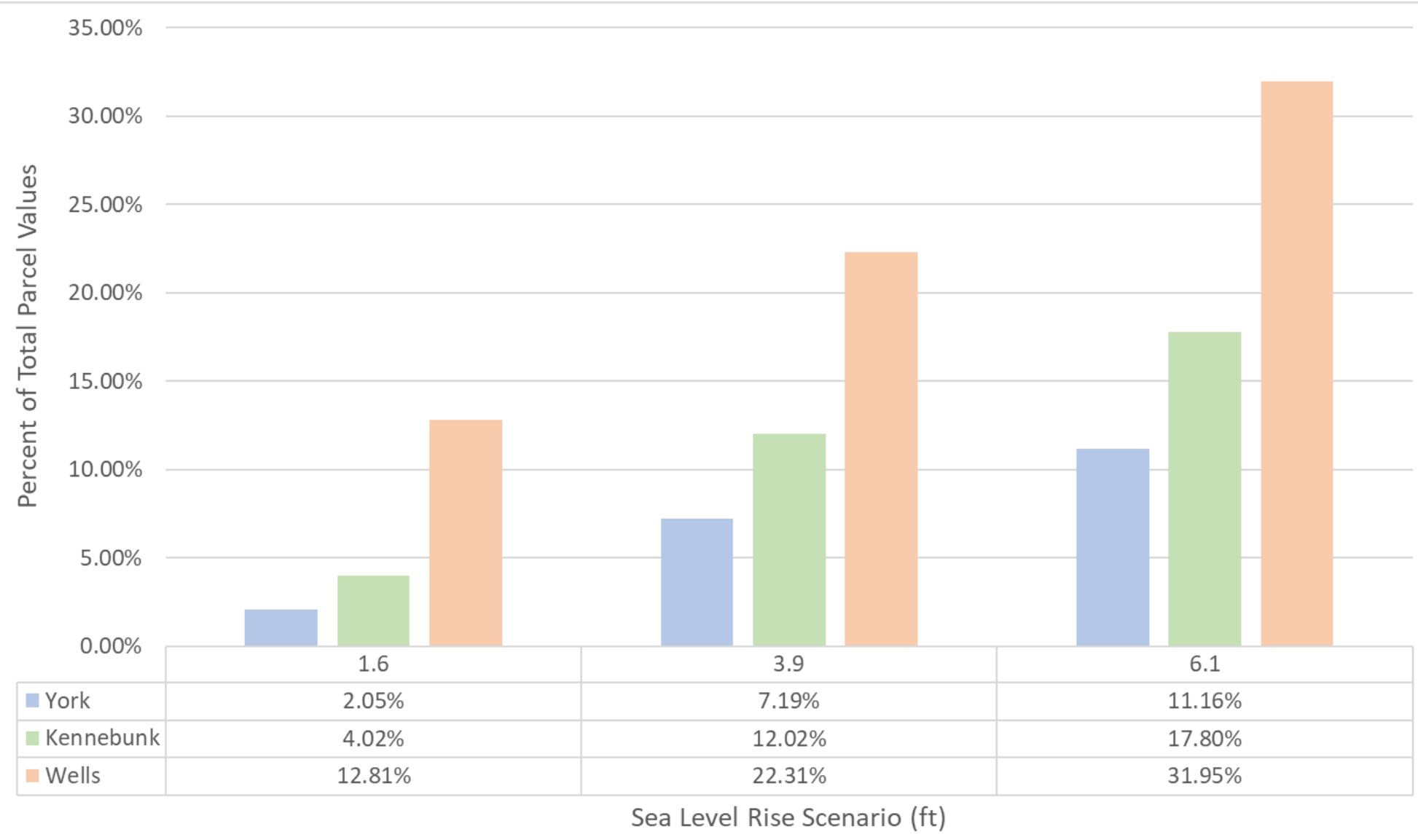
Parcels with Only Land at Risk



Parcel Values at Risk



Parcel Values at Risk



Parcel Values at Risk York

Occupancy Type	Total Value	Impacts from SLR			Percent of Total		
		1.6	3.9	6.1	1.6	3.9	6.1
NA	\$692,070,600	\$31,253,641	\$86,372,309	\$139,187,130	5%	12%	20%
AMUSE PARK	\$6,573,400	\$0	\$1,370,261	\$2,316,020	0%	21%	35%
APT 4-UNT MDL-01	\$1,583,900	\$0	\$544,900	\$544,900	0%	34%	34%
APT 4-UNT MDL-94	\$5,213,700	\$2,129	\$2,573	\$3,616	0%	0%	0%
AUTO REPR MDL-96	\$667,200	\$5,090	\$6,377	\$8,270	1%	1%	1%
BOWLING	\$1,360,800	\$0	\$0	\$274,970	0%	0%	20%
CAMPGROUND MDL-01	\$2,311,500	\$0	\$84,450	\$420,170	0%	4%	18%
CAMPGROUND MDL-94	\$11,529,700	\$123	\$109,525	\$407,926	0%	1%	4%
CHARITABLE MDL-01	\$1,969,500	\$58,184	\$151,015	\$280,459	3%	8%	14%
CHARITABLE MDL-94	\$34,813,000	\$324,347	\$516,369	\$1,284,657	1%	1%	4%
CHURCH MDL-96	\$17,107,800	\$379	\$2,820	\$20,438	0%	0%	0%
COMM BLDG MDL-94	\$16,801,700	\$0	\$0	\$1,772,200	0%	0%	11%
COMM BLDG MDL-96	\$1,198,900	\$65,670	\$378,500	\$378,500	5%	32%	32%
COMM WHSE MDL-96	\$6,568,100	\$18,335	\$45,047	\$79,022	0%	1%	1%
COMMON AREA	\$298,800	\$0	\$0	\$6,300	0%	0%	2%
COTTAGE COLONY	\$1,927,500	\$284,909	\$1,422,700	\$1,422,700	15%	74%	74%
DAY CARE	\$2,346,600	\$3,232	\$9,394	\$17,402	0%	0%	1%
GOLF CRSE MDL-94	\$10,522,800	\$4,510,400	\$4,510,400	\$4,510,400	43%	43%	43%
HOTELS MDL-94	\$62,597,400	\$1,310,731	\$1,395,225	\$1,455,899	2%	2%	2%
INNS	\$16,157,900	\$35,509	\$84,978	\$161,020	0%	1%	1%
LIT/SCI MDL-94	\$10,881,000	\$1,720,926	\$2,513,096	\$2,733,198	16%	23%	25%
MOTELS MDL-94	\$24,649,100	\$365,581	\$2,245,372	\$6,897,664	1%	9%	28%
MOTELS MDL-96	\$23,183,700	\$3,737	\$1,319,706	\$6,877,791	0%	6%	30%
MULTI HSES MDL-01	\$99,873,000	\$3,704,772	\$15,096,521	\$16,690,218	4%	15%	17%
MULTI WTR	\$41,637,000	\$1,387,536	\$2,613,594	\$6,384,758	3%	6%	15%
MUNICIPAL MDL-01	\$7,511,100	\$854,182	\$4,266,886	\$4,664,501	11%	57%	62%
MUNICIPAL MDL-94	\$67,118,800	\$1,073,443	\$2,801,748	\$5,465,935	2%	4%	8%
MUNICIPAL MDL-96	\$7,413,000	\$4,700	\$186,524	\$553,662	0%	3%	7%
OCN FT MDL-01	\$472,379,700	\$14,819,516	\$34,336,999	\$59,868,027	3%	7%	13%
POST OFF	\$2,338,700	\$0	\$0	\$8,622	0%	0%	0%
PROF BLDG	\$7,812,800	\$126,924	\$244,695	\$309,670	2%	3%	4%
REST/CLUBS	\$6,381,200	\$6,265	\$22,446	\$1,397,815	0%	0%	22%
REST/CLUBS MDL-94	\$16,201,900	\$1,813,080	\$3,030,182	\$4,457,942	11%	19%	28%
SFR (NL)	\$3,652,100	\$0	\$14,480	\$32,224	0%	0%	1%
SFR WATER MDL-01	\$196,960,000	\$13,312,686	\$29,912,516	\$39,332,779	7%	15%	20%
SING FAM MDL-94	\$2,299,200	\$0	\$34,521	\$1,421,100	0%	2%	62%
Single Fam MDL-01	\$2,772,984,500	\$21,020,552	\$126,719,398	\$199,188,562	1%	5%	7%
SINGLE FAM MDL-01	\$17,718,700	\$1,146,844	\$3,230,780	\$4,081,237	6%	18%	23%
STATE OWND MDL-96	\$5,575,200	\$0	\$623	\$14,709	0%	0%	0%
STORE/SHOP MDL-94	\$38,782,300	\$1,179,500	\$12,564,002	\$16,732,424	3%	32%	43%
STORE/SHOP MDL-96	\$12,969,500	\$0	\$0	\$1,693,200	0%	0%	13%
SWIM POOL	\$1,303,500	\$0	\$1,303,500	\$1,303,500	0%	100%	100%
TENNIS CLB	\$214,900	\$50,048	\$214,900	\$214,900	23%	100%	100%
THREE FAM	\$13,854,500	\$99,874	\$2,093,899	\$2,482,977	1%	15%	18%
TWO FAM MDL-01	\$2,002,700	\$0	\$2,242	\$70,203	0%	0%	4%
TWO FAMILY	\$89,481,300	\$979,114	\$15,291,521	\$16,797,040	1%	17%	19%
UTILITIES MDL-94	\$3,052,400	\$26,886	\$92,458	\$152,672	1%	3%	5%
UTILITIES MDL-96	\$3,603,900	\$109,695	\$141,304	\$164,580	3%	4%	5%
WORKING WATERFRONT	\$631,200	\$149,310	\$631,200	\$631,200	24%	100%	100%



Parcel Values at Risk Kennebunk

Model Description	Total Value	Impacts from SLR			Percent of Total		
		1.6	3.9	6.1	1.6	3.9	6.1
Commercial	\$311,016,800	\$7,040,995	\$15,213,675	\$17,723,358	2%	5%	6%
Industrial	\$231,239,200	\$677,056	\$14,202,148	\$18,969,586	0%	6%	8%
Mobile Home	\$8,468,300	\$0	\$0	\$4,486	0%	0%	0%
Outbuildings	\$16,415,600	\$3,965,784	\$4,747,325	\$4,953,612	24%	29%	30%
Res Condo	\$315,229,200	\$1,203,093	\$14,732,232	\$37,763,881	0%	5%	12%
→ Residential	\$1,737,197,033	\$84,894,148	\$259,363,720	\$383,586,549	5%	15%	22%
→ Serv Station	\$1,530,300	\$33,688	\$498,700	\$512,468	2%	33%	33%
→ Vacant	\$126,010,900	\$12,652,916	\$21,561,195	\$25,537,127	10%	17%	20%

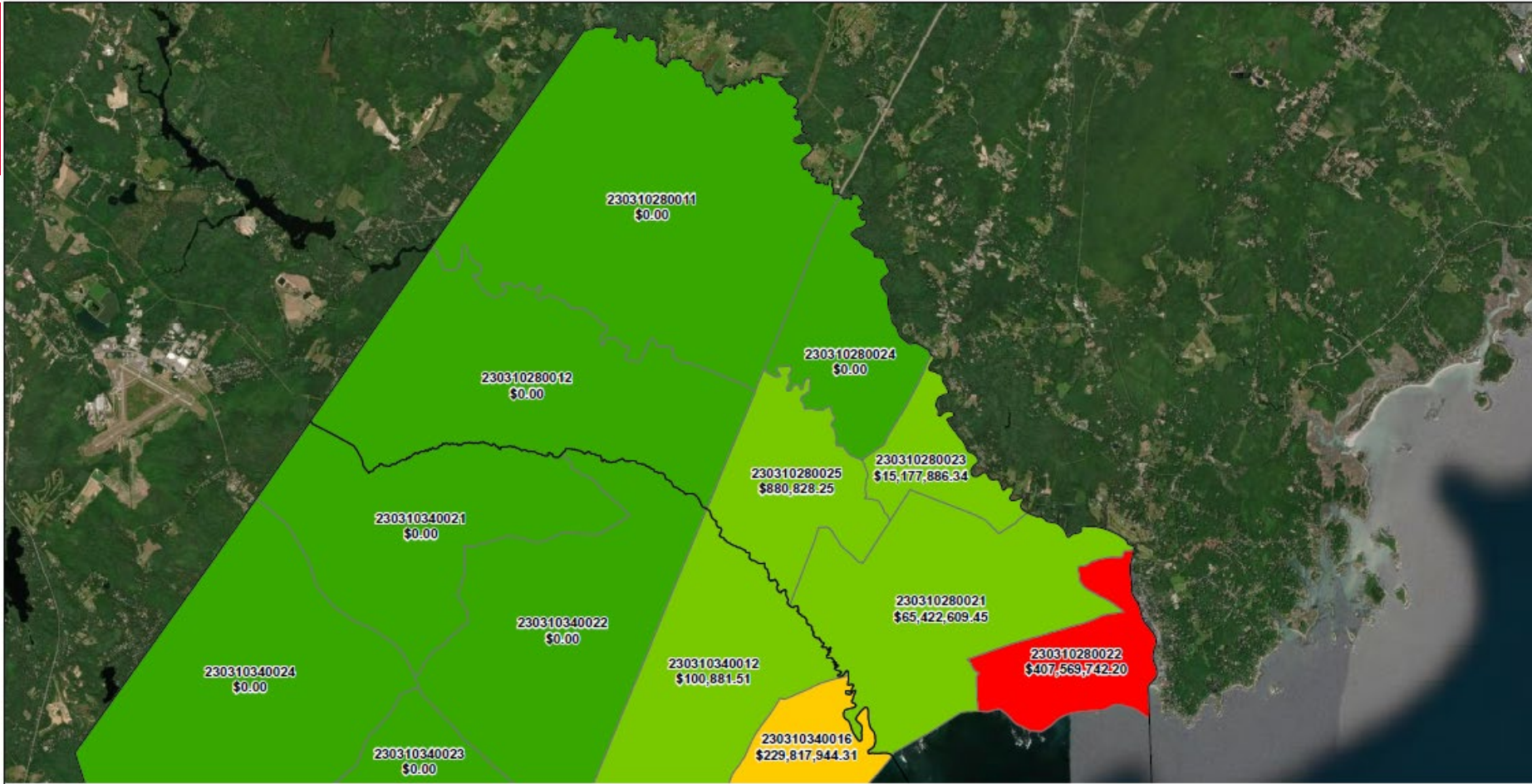


Parcel Values at Risk Wells

Model Description	Total Value	Impacts from SLR			Percent of Total		
		1.6	3.9	6.1	1.6	3.9	6.1
Apartment 01	\$3,898,750	\$161,154	\$273,251	\$1,017,860	4%	7%	26%
BANK BLDG	\$2,516,020	\$27,085	\$37,308	\$47,550	1%	1%	2%
CAMPGROUND MDL-01	\$5,088,580	\$1,912,730	\$1,912,730	\$1,912,730	38%	38%	38%
CAMPGROUND MDL-94	\$18,052,410	\$22,446	\$25,491	\$27,132	0%	0%	0%
Cemetery	\$354,650	\$2,196	\$4,861	\$6,981	1%	1%	2%
CHURCHES MDL-94	\$5,396,490	\$116,947	\$1,720,600	\$1,720,600	2%	32%	32%
COMM BLDG MDL-94	\$7,234,700	\$8,654	\$22,816	\$29,881	0%	0%	0%
Condo 01	\$4,130,060	\$0	\$3,258	\$622,810	0%	0%	15%
Condo 07	\$42,684,090	\$2,226,526	\$3,151,953	\$4,633,945	5%	7%	11%
Condo 94	\$4,752,370	\$2,193	\$13,516	\$42,202	0%	0%	1%
Condo OM 04	\$26,368,170	\$2,236,799	\$4,342,498	\$8,091,435	8%	16%	31%
Condominium	\$443,043,420	\$20,916,557	\$38,633,913	\$56,404,504	5%	9%	13%
DEVEL LAND	\$3,943,400	\$59,211	\$167,387	\$178,428	2%	4%	5%
DUMMY LAND MDL-00	\$12,780,680	\$388,800	\$388,800	\$388,800	3%	3%	3%
DUMMY LAND MDL-02-3	\$869,180	\$0	\$115,520	\$115,520	0%	13%	13%
Dummy Land PP Tri Tr	\$1,885,140	\$119,070	\$119,070	\$119,070	6%	6%	6%
Manuf-HUD or Mobile	\$42,642,080	\$66,631	\$214,725	\$373,273	0%	1%	1%
Mobile Home No Lnd	\$17,385,420	\$0	\$0	\$39,090	0%	0%	0%
MOTELS MDL-01	\$12,171,070	\$37,257	\$63,178	\$91,525	0%	1%	1%
MOTELS MDL-94	\$37,348,590	\$103,289	\$4,035,063	\$7,352,560	0%	11%	20%
Multi Houses	\$62,292,980	\$19,187,323	\$27,408,594	\$29,270,056	31%	44%	47%
Multi Houses Ocnfrt	\$40,489,630	\$5,638,392	\$18,827,143	\$33,384,753	14%	46%	82%
MUNICIPAL MDL-00	\$7,514,060	\$2,359,786	\$3,091,128	\$3,569,160	31%	41%	47%
MUNICIPAL MDL-94	\$7,381,810	\$610,701	\$673,986	\$844,293	8%	9%	11%
NON PROFIT MDL-00	\$1,137,350	\$183,050	\$638,150	\$638,150	16%	56%	56%
NON PROFIT MDL-01	\$3,484,400	\$130,951	\$147,358	\$173,309	4%	4%	5%
NON PROFIT MDL-94	\$1,915,060	\$599,866	\$790,301	\$1,120,780	31%	41%	59%
Oceanfront	\$391,982,590	\$31,061,348	\$148,041,622	\$335,365,899	8%	38%	86%
OTH MTR SS	\$1,423,650	\$234,087	\$1,423,650	\$1,423,650	16%	100%	100%
PARK LOT	\$29,020	\$137	\$29,020	\$29,020	0%	100%	100%
PRI COMM MDL-01	\$1,544,340	\$383,870	\$383,870	\$383,870	25%	25%	25%
RES LEASED LND MDL-01	\$1,833,030	\$0	\$211,710	\$211,710	0%	12%	12%
REST/CLUBS MDL-94	\$14,512,720	\$1,039,848	\$1,623,670	\$1,704,178	7%	11%	12%
Sanitary D MDL-00	\$336,780	\$175,840	\$231,270	\$322,740	52%	69%	96%
Sanitary D MDL-01	\$375,430	\$375,430	\$375,430	\$375,430	100%	100%	100%
Sanitary D MDL-94	\$5,963,500	\$7,542	\$190,545	\$210,258	0%	3%	4%
SHOPNGMALL	\$5,280,390	\$0	\$164	\$21,588	0%	0%	0%
SINGLE FAM	\$4,304,860	\$13,114	\$20,498	\$26,585	0%	0%	1%
Single Family	\$1,575,402,680	\$280,593,574	\$397,507,691	\$459,931,513	18%	25%	29%
STATE	\$6,872,910	\$162,944	\$216,996	\$254,364	2%	3%	4%
STORE/SHOP MDL-01	\$6,623,390	\$61,041	\$1,103,360	\$1,103,360	1%	17%	17%
STORE/SHOP MDL-94	\$22,078,600	\$2,109,417	\$2,629,936	\$2,638,077	10%	12%	12%
SUPERMKT	\$4,936,320	\$16,812	\$32,026	\$52,000	0%	1%	1%
Three Fam Ocnfrnt	\$447,010	\$0	\$1,288	\$447,010	0%	0%	100%
Three Family	\$4,561,270	\$1,474,069	\$1,587,743	\$2,060,990	32%	35%	45%
TOWN-PROP MDL-00	\$3,638,830	\$303,110	\$303,110	\$303,110	8%	8%	8%
TOWN ACQ MDL-00	\$783,160	\$124,710	\$257,250	\$257,250	16%	33%	33%
TT LEASED LN MDL-02	\$44,295,180	\$40,470	\$40,470	\$40,470	0%	0%	0%
Two Family	\$1,851,280	\$0	\$36,398	\$428,558	0%	2%	23%
Two Family 01	\$48,648,610	\$16,581,201	\$25,160,701	\$27,005,139	34%	52%	56%
Two Family Ocnfrnt	\$41,647,120	\$4,642,086	\$15,415,434	\$36,118,187	11%	37%	87%
US GOVT MDL-00	\$10,120,230	\$7,757,925	\$8,050,925	\$8,416,309	77%	80%	83%
US GOVT MDL-94	\$1,207,940	\$188,040	\$188,040	\$188,040	16%	16%	16%
Vac Imp OB	\$4,649,750	\$2,971,100	\$2,971,100	\$2,971,100	64%	64%	64%
Vac Ocnfrnt Unbld	\$159,050	\$5,542	\$74,311	\$138,250	3%	47%	87%
Vacant	\$73,045,133	\$8,204,666	\$11,022,489	\$12,570,006	11%	15%	17%
Vacant Ocnfrnt	\$2,654,950	\$0	\$100,737	\$981,902	0%	4%	37%
Vacant Pot Dev.	\$16,178,770	\$1,015,528	\$1,026,330	\$1,168,524	6%	6%	7%
Vacant Unbuild	\$4,176,640	\$1,765,985	\$1,816,690	\$1,833,775	42%	43%	44%
WATER UTIL MDL-00	\$3,442,650	\$0	\$0	\$136	0%	0%	0%
WATER UTIL MDL-94	\$655,530	\$10,593	\$71,250	\$71,250	2%	11%	11%
Waterfront	\$29,829,770	\$13,894,375	\$24,797,921	\$28,463,450	47%	83%	95%
Whole T.Sh MDL-00	\$3,488,190	\$853,200	\$853,200	\$853,200	24%	24%	24%

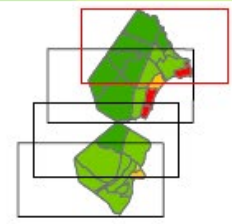


Parcels at Risk by Census Block Group



LEGEND:

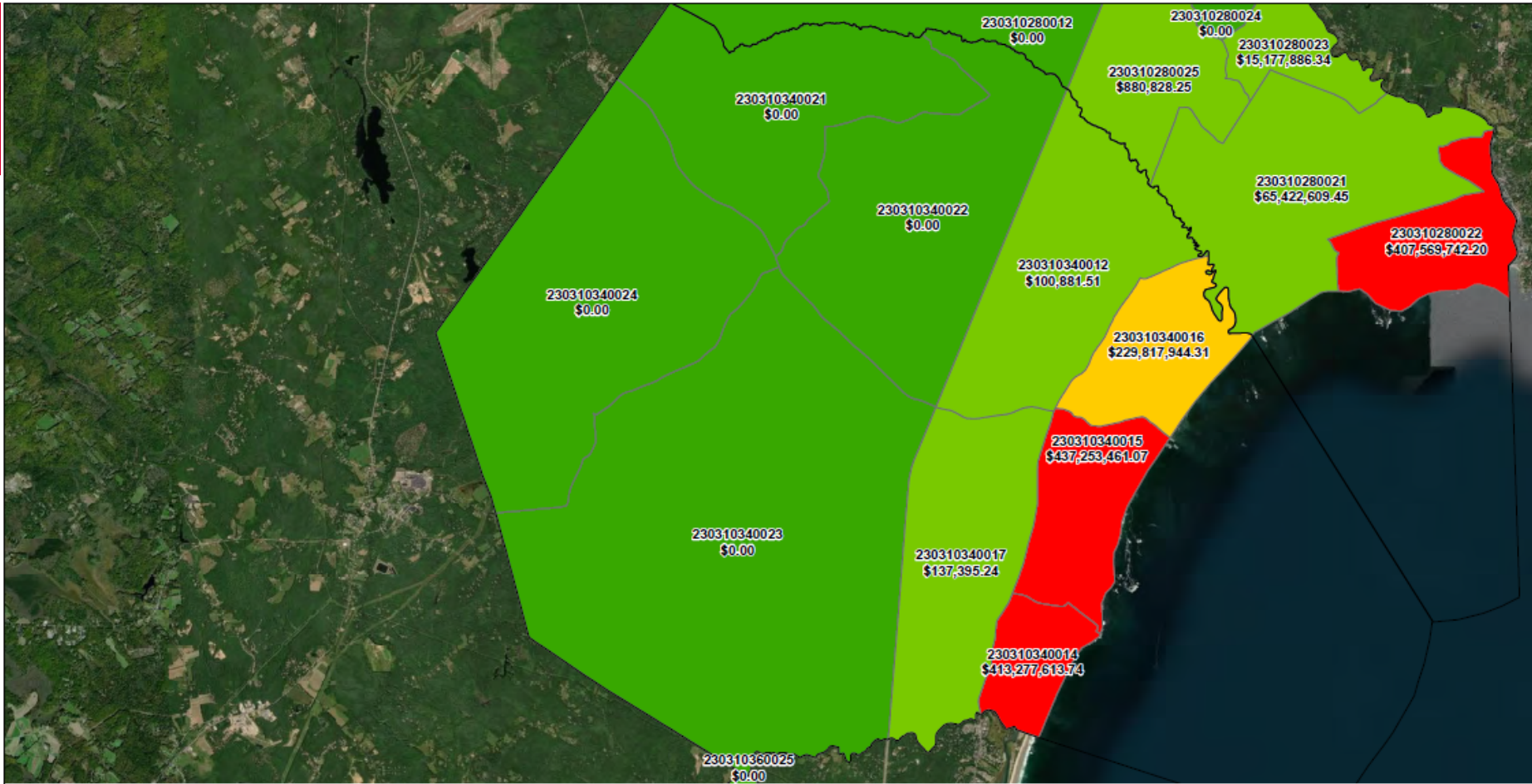
6.1 FT SEA LEVEL RISE		Yellow	\$174.9 M - \$262.4 M
Green	\$0	Orange	\$262.4 M - \$349.8 M
Light Green	\$0 - \$87.5 M	Red	\$349.8 M - \$437.3 M
Yellow-Green	\$87.5 M - \$174.9 M		



Vulnerability Assessment for the Towns of York, Wells, and Kennebunk, Maine Southern Maine Planning & Development Commission Saco, Maine		PARCEL VALUATION IMPACT FROM 6.1 FT SEA LEVEL RISE GROUPED BY BLOCK GROUPS
	Project 2000925	September 2020

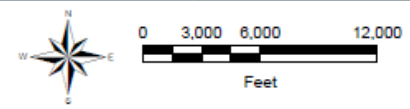
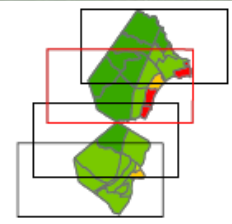


Parcels at Risk by Census Block Group



LEGEND:

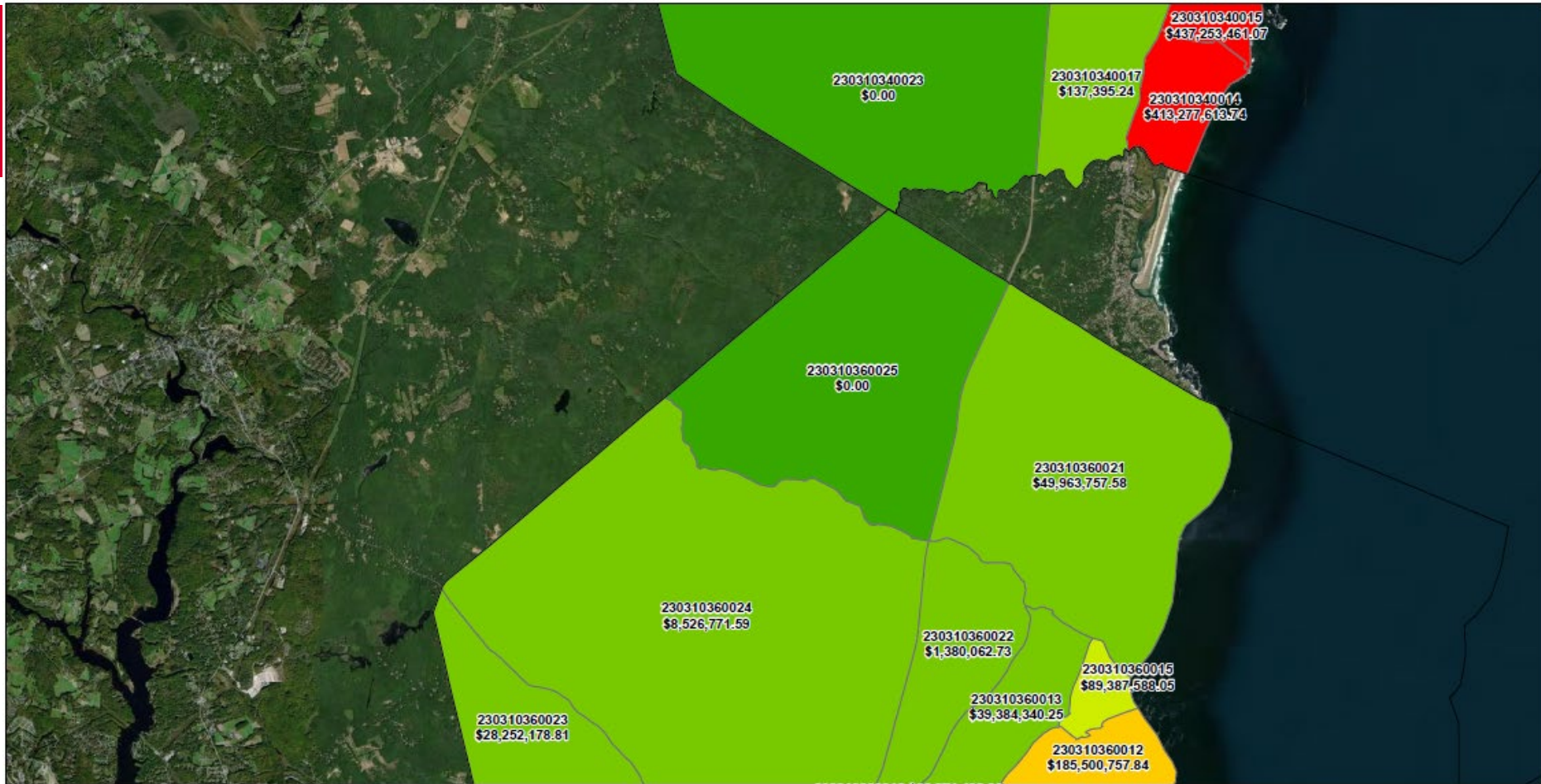
6.1 FT SEA LEVEL RISE		\$174.9 M - \$262.4 M
		\$262.4 M - \$349.8 M
		\$349.8 M - \$437.3 M
		\$0
		\$0 - \$87.5 M
		\$87.5 M - \$174.9 M



Vulnerability Assessment for the Towns of York, Wells, and Kennebunk, Maine Southern Maine Planning & Development Commission Saco, Maine		PARCEL VALUATION IMPACT FROM 6.1 FT SEA LEVEL RISE GROUPED BY BLOCK GROUPS
	Project 2000925	September 2020

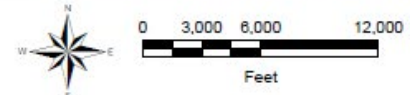
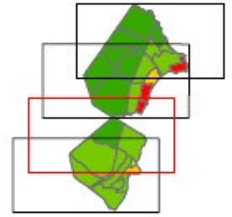


Parcels at Risk by Census Block Group



LEGEND:

6.1 FT SEA LEVEL RISE	
■	\$0
■	\$0 - \$87.5 M
■	\$87.5 M - \$174.9 M
■	\$174.9 M - \$262.4 M
■	\$262.4 M - \$349.8 M
■	\$349.8 M - \$437.3 M



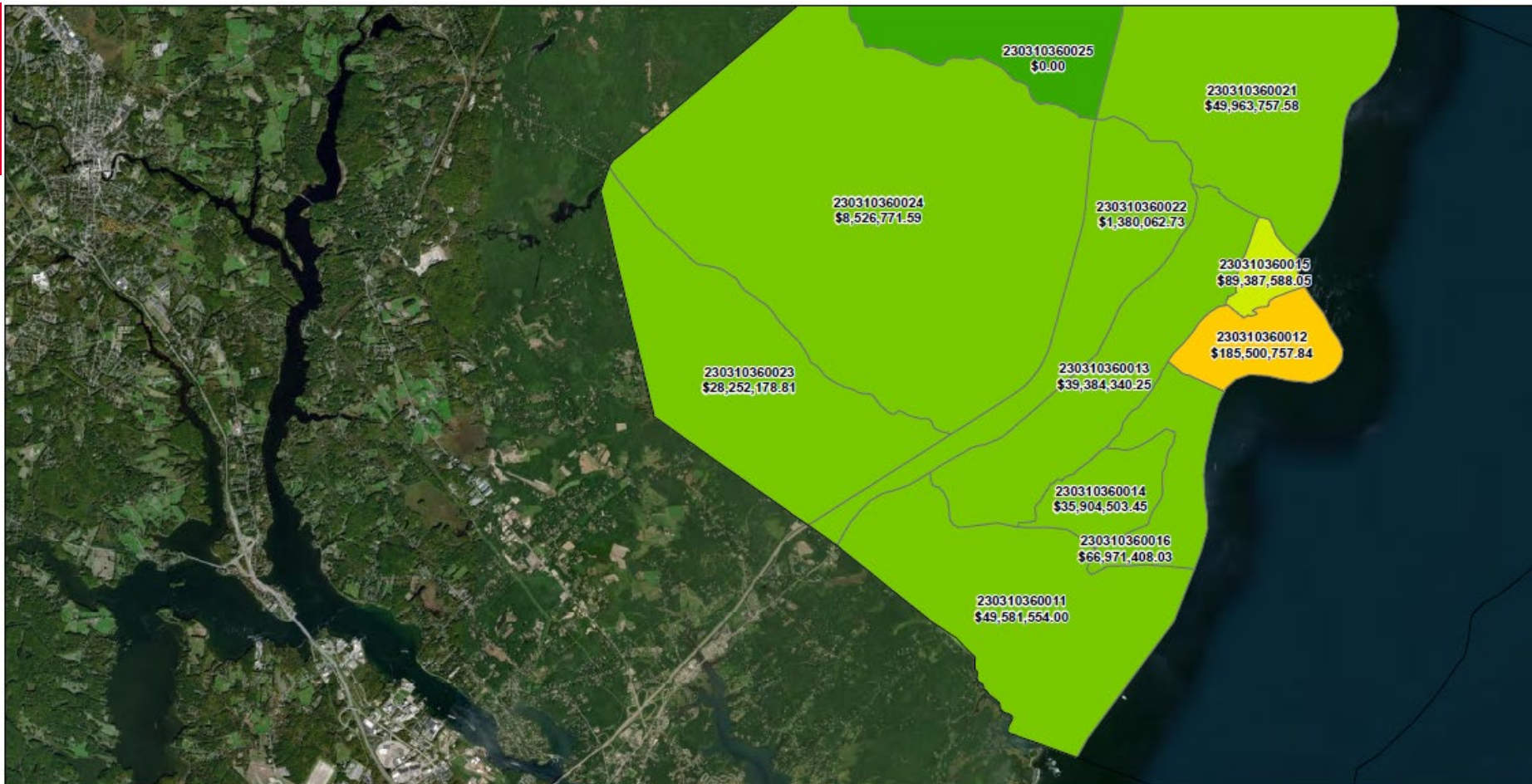
Vulnerability Assessment for the Towns of York, Wells, and Kennebunk, Maine
 Southern Maine Planning & Development Commission
 Saco, Maine



PARCEL VALUATION IMPACT FROM 6.1 FT SEA LEVEL RISE GROUPED BY BLOCK GROUPS
 Project 2000925 September 2020 Fig. 88

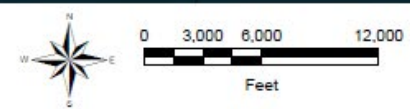
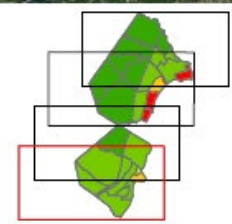



Parcels at Risk by Census Block Group



LEGEND:

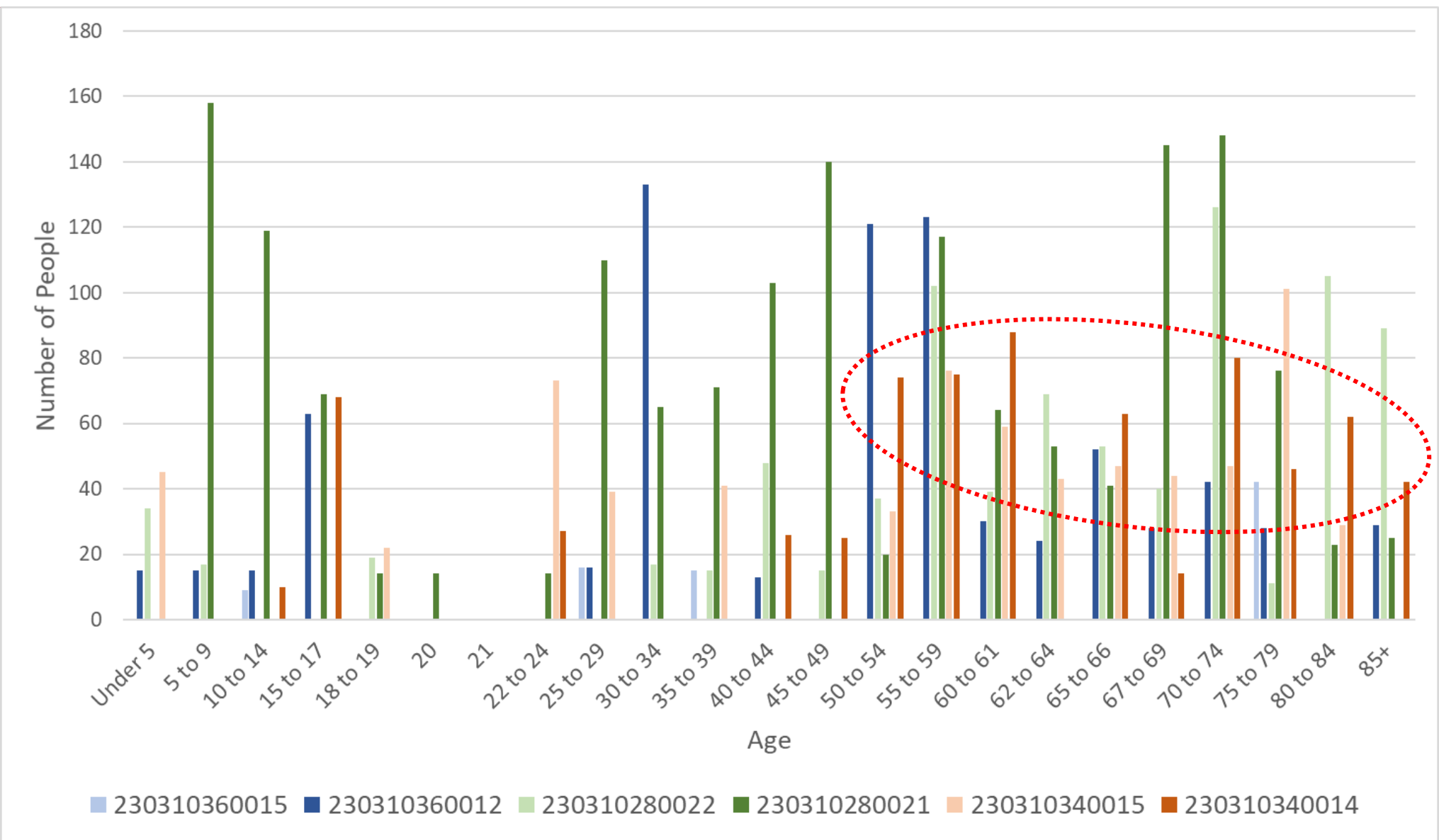
6.1 FT SEA LEVEL RISE	
■	\$0
■	\$0 - \$87.5 M
■	\$87.5 M - \$174.9 M
■	\$174.9 M - \$262.4 M
■	\$262.4 M - \$349.8 M
■	\$349.8 M - \$437.3 M



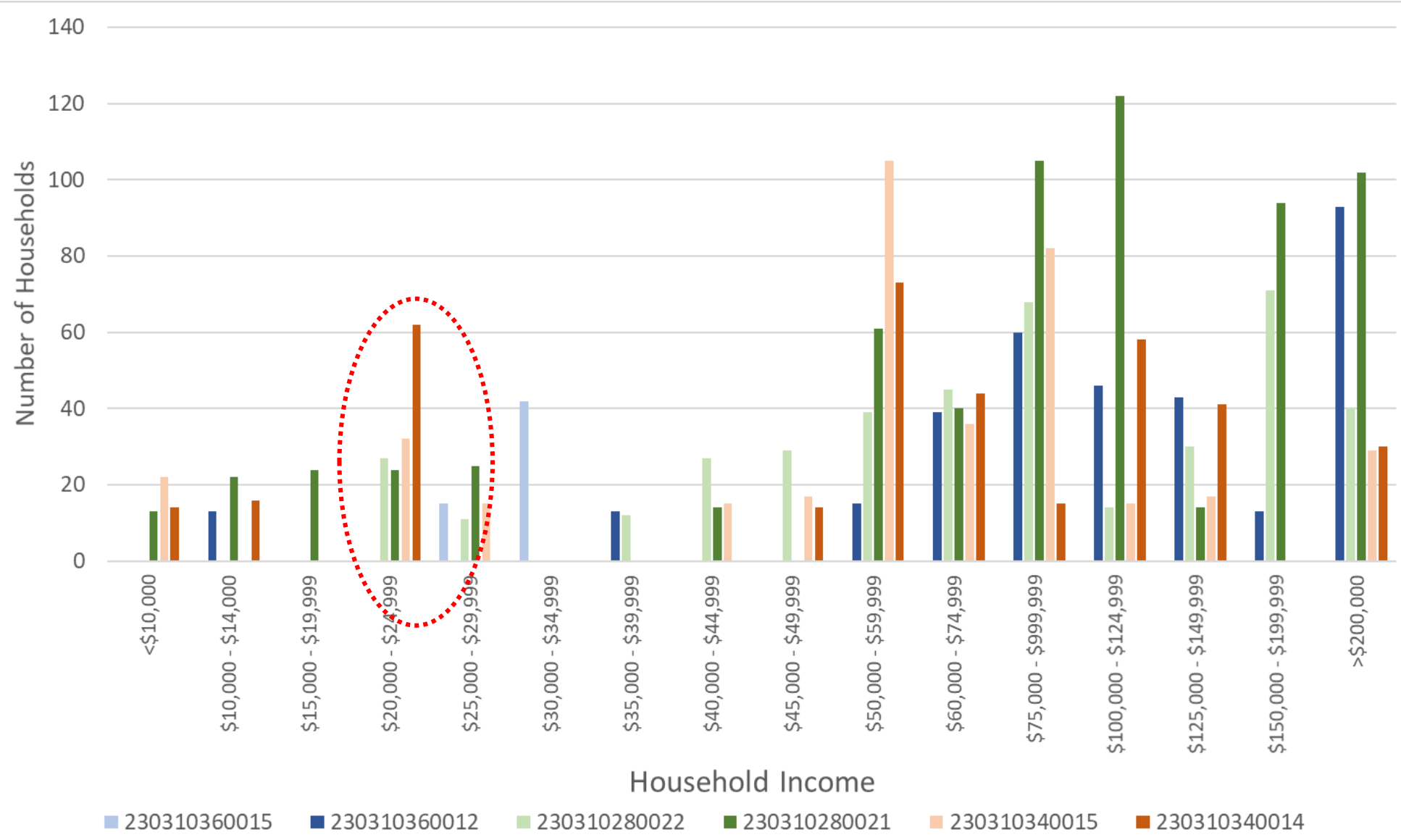
Vulnerability Assessment for the Towns of York, Wells, and Kennebunk, Maine	 GEI Consultants	PARCEL VALUATION IMPACT FROM 6.1 FT SEA LEVEL RISE GROUPED BY BLOCK GROUPS
Southern Maine Planning & Development Commission Saco, Maine		Project 2000925 September 2020 Fig. 87



Age Distribution Among Census Block Groups*



Household Income Distribution Among Census Block Groups*



York Assets/ Infrastructure

Asset (unit of measurement)	Total Amount
Sidewalk (sq ft)	378,384
Centerlines (ft)	1,045,478
York septic systems (n)	336
York parks (sq ft)	12,433,554
York MHCP archeological sites (n)	142
York local historic districts (sq ft)	9,003,042
York health/medical parcels (sq ft)	680,510
York government parcels (sq ft)	5,616,573
York farm district parcels (sq ft)	32,257,029
York emergency services (sq ft)	388,214
York Water District water mains (ft)	433,493
York Water District summer line mains (ft)	84,782
York Sewer District sewer pipes (ft)	246,961
York drainage pipes culverts (ft)	77,308
York drainage ditches (ft)	16,402
York Water District hydrants (n)	438
York drainage structures (n)	1,087
York drainage pipe openings (n)	3,675
York drainage outfalls (n)	153

Impacts from SLR		
1.6	3.9	6.1
0	5,742	30,814
5,956	27,562	53,338
0	0	7
238,854	369,688	590,768
84	84	85
973,006	1,063,934	1,198,213
35,041	54,010	70,773
22,919	22,919	30,547
140,163	241,012	368,897
33	8,744	27,658
3,679	12,636	25,790
1,657	9,393	12,893
2,141	23,402	37,613
1,887	8,039	16,604
474	1,142	3,356
1	10	23
13	71	136
86	175	296
16	37	56

Percent of Total		
1.6	3.9	6.1
0%	2%	8%
1%	3%	5%
0%	0%	2%
2%	3%	5%
59%	59%	60%
11%	12%	13%
5%	8%	10%
0%	0%	1%
0%	1%	1%
0%	2%	7%
1%	3%	6%
2%	11%	15%
1%	9%	15%
2%	10%	21%
3%	7%	20%
0%	2%	5%
1%	7%	13%
2%	5%	8%
10%	24%	37%



Kennebunk Assets/ Infrastructure

<u>Asset (unit of measurement)</u> EXPORT ZONES (sq ft)	<u>Total Amount</u>
119 Main Street Contact Zone	4,353
12 Depot Street Contract Zone	35,665
39 Portland Road Contract Zone	49,261
Branch Brook A	43,035,115
Branch Brook B	53,296,784
Business Park	15,438,642
Coastal Residential	40,387,824
Cousens School Contract Zone	126,351
Downtown Business	1,846,998
Industrial	19,082,160
Lower Village Business	8,760,441
One Alfred Road Contract Zone	532,211
Protland Road Mixed Use	333,077
Rural Conservation	317,126,623
Rural Residential	219,812,999
Suburban Commercial	8,735,314
Suburban Residential	74,445,974
Terrace Green Contract Zone	4,593,567
Upper Square	971,711
Village Residential	161,522,827
Webber Hill Road Contract Zone	1,265,024
West Kennebunk Village Mixed Use	1,856,708
Western Ave CZ	455,812
York Street Mixed Use	8,065,787

<u>Impacts from SLR</u>		
1.6	3.9	6.1
0	0	0
0	0	0
0	0	0
0	0	1,032
0	0	0
0	0	0
13,141,612	19,506,324	23,763,076
0	0	0
0	148	23,154
1,313,987	1,602,500	1,887,669
1,452,754	1,887,658	2,340,744
0	0	0
0	0	0
20,496,071	26,190,009	31,656,897
0	0	0
45,753	138,268	216,445
5,661,872	7,464,317	9,428,198
0	0	0
0	0	0
2,864,698	3,329,375	3,764,626
0	0	0
0	0	0
1,712	12,078	44,197
0	0	0

<u>Percent of Total</u>		
1.6	3.9	6.1
0%	0%	0%
0%	0%	0%
0%	0%	0%
0%	0%	0%
0%	0%	0%
0%	0%	0%
33%	48%	59%
0%	0%	0%
0%	0%	1%
7%	8%	10%
17%	22%	27%
0%	0%	0%
0%	0%	0%
6%	8%	10%
0%	0%	0%
1%	2%	2%
8%	10%	13%
0%	0%	0%
0%	0%	0%
2%	2%	2%
0%	0%	0%
0%	0%	0%
0%	3%	10%
0%	0%	0%



Wells Assets/ Infrastructure

Asset (unit of measurement)	Total Amount
OVERLAY DISTRICTS (sq ft)	
MH	4,494,934
OS	37,094,672
SH	35,634,144
ST	35,634,144
ZONING DISTRICTS (sq ft)	
AP	37,944,169
BB	1,107,352
GB	42,338,961
H	2,008,006
LI	46,569,108
QM	16,299,678
R	1,079,089,398
RA	202,365,653
RB	10,080,410
RC	28,660,343
RD	4,760,696
RP	121,466,824
TC	2,321,883
Right of ways (sq ft)	66,404,366
Wells Roads (ft)	1,063,374
Wells pressurized mains (ft)	28,621
Wells gravity mains (ft)	286,065
Wells fire stations (n)	3
Wells pumps (n)	16
Wells manholes (n)	1,425

Impacts from SLR		
1.6	3.9	6.1
0	0	0
16,531	110,861	176,978
600,805	741,653	843,004
9,497,184	14,627,512	18,046,442
0	0	5,776
289,547	531,026	655,259
1,555,431	2,434,928	3,239,980
651,013	865,708	1,501,807
0	0	0
0	0	0
486,106	693,532	906,844
2,399,416	4,078,959	5,508,189
3,955,550	5,970,347	7,477,347
0	0	0
2,511,904	3,590,625	4,248,042
59,731,557	61,970,572	63,538,657
0	0	0
1,313,134	2,485,795	3,201,958
35,053	64,071	80,142
7,596	9,075	10,052
28,982	54,525	71,221
0	0	0
0	0	0
147	267	352

Percent of Total		
1.6	3.9	6.1
0%	0%	0%
0%	0%	0%
2%	2%	2%
27%	41%	51%
0%	0%	0%
26%	48%	59%
4%	6%	8%
32%	43%	75%
0%	0%	0%
0%	0%	0%
0%	0%	0%
1%	2%	3%
39%	59%	74%
0%	0%	0%
53%	75%	89%
49%	51%	52%
0%	0%	0%
2%	4%	5%
3%	6%	8%
27%	32%	35%
10%	19%	25%
0%	0%	0%
0%	0%	0%
10%	19%	25%



Questions



Alex Gray

agray@geiconsultants.com

(207) 797-8903 (office)

(207) 317-9494 (cell)